



THE MINER'S RIGHT

The North Queensland Miner's Association Incorporated
Representing Miners, Prospectors and Associated Industries

February 2019

PRESIDENT:

James Said
Ph: 0427 569 848

VICE-PRESIDENT:

Graham Byrne
Ph: 07 4060 2238

SECRETARY:

Lyn Byrne
Ph: 07 4091 4905

TREASURER:

Michele Mobbs
Ph: 07 4093 0052

**NATIVE TITLE
OFFICER:**

Paul Crossland
Ph: 07 4095 3324

EDITOR:

Claire Mackney

WEBSITE:

www.nqma.com.au

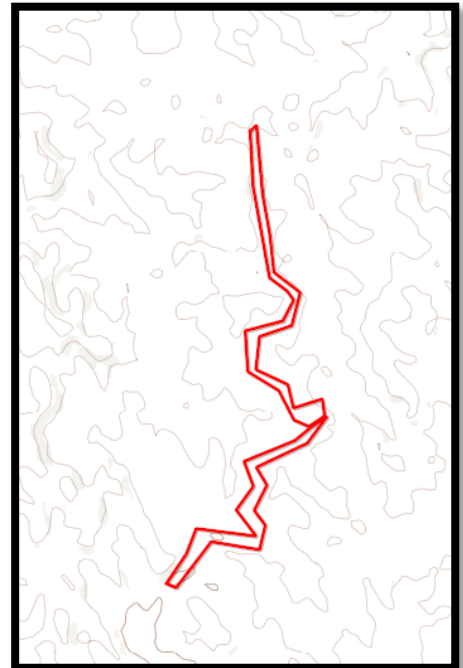
Be boundary aware!

Before commencing operations, ensure that you are aware of the locations of your boundary pegs. This can become an interesting prospect for those who have purchased older mining leases where the pegs may have burned, washed away or been eaten by termites.

Using the Mines Online Mapping system will give you an idea of the location of your boundaries but for those leases that were transferred from the previous system, IRTM, it may literally be hit and miss. The most accurate way to ensure that you are within your boundaries is to check the remaining pegs and check the location against the original application description of tenure.

A lot of the older mining leases are pegged tight on the river and exclude the outer bends

There are fairly hefty penalties for tenement holders found working outside their boundaries including fines and the possibility of cancellation of tenure. If you are unsure of your boundary, contact Field and Land Access to discuss ways to confirm your peg locations.



Dates to remember

1 March 2019

Standard Environmental Authority Annual Returns due for lodgement.

11 March 2019

North Queensland Miners Association General Meeting (to be confirmed).

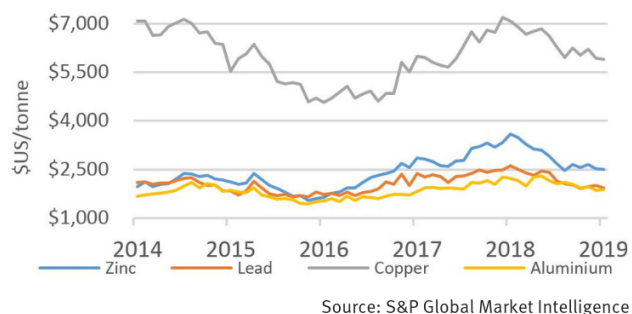
INSIDE THIS ISSUE

Be boundary aware	1
Wolfram Camp Mine	3
Land Access Ombudsman tips	6
Environmental authorities	7
Mapping tools	8
Tin mining news	9
Mineral in focus	10
Advertising	11
Associate Water Obligations.....	12
Membership form	13

"Your mind is like a gold mine, if you dig deep you will find something golden."

— Gift Gugu Mona

RESOURCES UPDATE



MINERAL PRICES

2019 forecasts expect nickel, zinc, lead and copper prices to rally substantially.



JVIB – Our passion for insurance ensures your peace of mind.

Let your local JVIB broker compare quotes from their range of insurers to find the right policy for you. We are here to help with your insurance questions so give us a call today.



JOE VELLA
INSURANCE BROKERS



CAIRNS Level 1, 108 Mulgrave Rd, Cairns
MAREEBA 113 Byrnes St, Mareeba
ATHERTON Unit 1/1-3 Mabel St, Atherton

Phone: (07) 4040 4444
Email: jvib@jvib.com.au
Website: www.jvib.com.au

Editors Notes:

The Miners Right is usually published every February, May, July, September and November prior to the NQMA general meetings. The MR is a great way to share information within our mining community. We are always looking for contributions to make the newsletter interesting and informative. If you would like to see something included or you can contribute stories, historical information or general mining info please contact the editor. Members can also advertise their business, items for sale or wanted items without charge. Please send requests via email to Claire@tenementmatters.com.au.

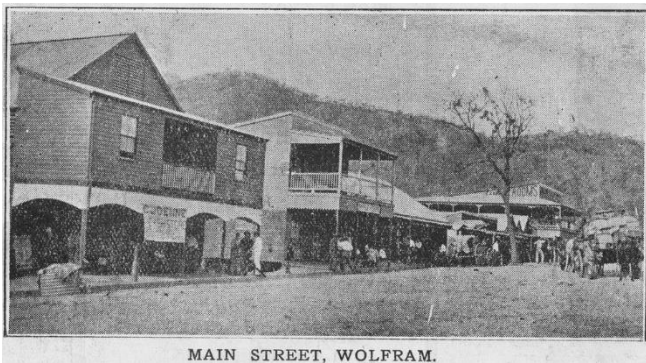
Disclaimer: While every effort is made to ensure that information provided in the Miners Right is correct, it should not be relied on when making decisions in relation for your business. The NQMA committee recommends that appropriate professional advice should be sought.

Wolfram Camp Mine

From historic mining town to modern abandoned mine.

Wolfram, also referred to as Wolfram Camp, was a mining town in Queensland located 90km west of Cairns and 15km south of Thornborough.

The mineral wolfram was discovered in the area in 1891 bringing miners from neighbouring regions such as Thornborough and Palmer River forming the settlement.



MAIN STREET, WOLFRAM.

Today little remains of the township other than ruins.



Foundations of Thermo Electric Ore Reduction Corporation Mill (taken by Claire 2017)

The AusIMM discussion paper (number 40) 1920 describes in detail the operation carried out by Burma Queensland Corporation Mill at that time and takes you on a journey to mining of yesteryear.

Wolfram Camp Mine is a mineral area much coveted by geologists and keen fossickers for the abundance of high quality mineral specimens to be found including wolfram, native bismuth, molybdenite, and clear quartz and smoky quartz crystals.

In recent history, the mine changed hands a number of times before being held by Wolfram Camp Mines Pty Ltd and Tropical Metals Pty Ltd.

After a very brief period of production in 2008 under the former holders, the mine started open pit mine production during the latter months of 2011 and the mill was commissioned early in 2012. Production continued until March 2015 after which production was stopped so as to allow a number of improvements to be made to the processing facilities. It was intended to restart the mine in 2018.

In December 2018, the Department of Natural Resources and Mines declared Wolfram Camp Mine an abandoned mine.

The Queensland Government Gazette No 88 dated 14 December 2018 declares Restricted Area 442 over a large portion of the geological occurrence that forms the Wolfram Camp Mineral Field that extends from historical townships of Thornborough to Petford and includes the Bamford Hill resource.

More detailed information can be found at <https://miningdataonline.com/property/747/Wolfram-Camp-Mine.aspx#Geology>.

NOTIFICATION OF RESTRICTIONS ON GRANT OF MINING TENEMENTS ETC UNDER SECTION 391 OF THE MINERAL RESOURCES ACT 1989 AND SECTION 33 OF THE GEOTHERMAL ENERGY ACT 2010.

Pursuant to section 391 of the *Mineral Resources Act 1989* and section 33 of the *Geothermal Energy Act 2010*, I notify the prohibition of the application for all mining tenements except for tender-derived mining tenements in respect of the land in the subblocks shown on the block identification map stated in the following schedule.

The Hon. Dr Anthony Lynham
Minister for Natural Resources, Mines and Energy

[Note: The Schedule includes, for each area, the number (restricted area number), name of block identification map, block, and subblock descriptions. The block and sub block descriptions are defined on *Queensland Mines and Energy Block Identification Maps Series B*.]

Schedule

The land in the following blocks and sub-blocks on the stated block identification map is included in the restricted area **RA442—Townsville block identification map**

BIM-SERIES B	BLOCK	SUB-BLOCK
Townsville	875	c,d,e,h,j,k,n,o,p,s,t,u,x,y,z
Townsville	876	All
Townsville	877	a,b,c,f,g,h,l,m,n,q,r,s,v,w,x
Townsville	947	e,k,p,u,z
Townsville	948	a,b,c,d,e,f,g,h,j,k,l,m,n,q,r,s v,w,x
Townsville	949	a,b,c,f,g,h
Townsville	1019	e,k,p,u,z
Townsville	1020	a,b,c,f,g,h,l,m,n,o,p,q,r,s,t u,v,w,x,y,z
Townsville	1091	e,,p,u,z
Townsville	1092	All
Townsville	1163	e
Townsville	1164	a,b,c,d,e



Photos from Claire's collection



Four tips for a positive outcome through the Land Access Ombudsman

Provided by the Office of the Land Access Ombudsman



**LAND ACCESS
OMBUDSMAN**

The Land Access Ombudsman (LAO) provides free, impartial dispute resolution services for resource authority holders and landholders. They can help you avoid court action, which can save considerable time and money.

If you're party to a Conduct and Compensation Agreement (CCA) or Make Good Agreement (MGA) and find yourself in conflict with the landholder over an alleged breach, the following tips can help you have a smooth and efficient experience with the Land Access Ombudsman.

- **If you want to refer a dispute, do your best to resolve the issue before going to the LAO**
You can't refer a dispute to the LAO until a reasonable attempt to resolve the issue has been made, but don't just treat this part of the process as a box to be ticked. The more you try to work with the landholder to resolve the issue and improve relations, the better informed you'll be if you do need to refer the dispute. Better yet, you may not need to go to the LAO at all.
- **If a landholder raises a dispute against you, be involved in the process and share all information**
Received notice that someone has referred a dispute to the Ombudsman about you? It's natural to feel defensive. But you should use this opportunity to share your position, telling them what's happened and how you've tried to resolve the matter. This will help to assess your dispute and work towards a resolution that suits both sides.
- **Have your supporting evidence at hand**
Before getting in touch with the LAO, get ready to provide a copy of your CCA or MGA, and any relevant communications, photos or other supporting documents. Giving a complete picture of the situation will allow the LAO to better understand the issues and more efficiently deal with the dispute.
- **Participate in good faith**
The LAO is impartial and aims to find a practical solution that satisfies both parties. The process can save you time, stress and money, and improve your land access relations moving forward. Be open-minded, understanding and communicative for your best chance of a more productive relationship and less future angst.

For more information about the types of disagreements the Land Access Ombudsman can investigate and how they can help, visit www.lao.org.au.

AMETS

Australian Mining
and Exploration
Title Services

Specialists in tenement management
and administration Australia wide.

Shop 3, 165 Byrnes Street, Mareeba QLD 4880

07 4092 6431

www.amets.com.au

Environmental Authorities

When making an application for There are 3 types of EA applications you can make, depending on whether you can meet the relevant eligibility criteria and standard conditions for your activity:

- **standard application** - if your ERA can meet the eligibility criteria and comply with the standard conditions
- **variation application** - if your ERA can meet the eligibility criteria, but you want to vary one or more of the standard conditions
- **site-specific application** - if your ERA does not have eligibility criteria or cannot meet the eligibility criteria.

The eligibility criteria and standard conditions can be found at <https://environment.des.qld.gov.au/assets/documents/regulation/rs-es-mining-lease-projects.pdf>

Financial Assurance Application

Before commencing work on your mining tenure or exploration permits, you are required to do a financial assurance (FA) calculation to ascertain what your rehabilitation liability will be.

The [guideline](#) and calculator can be found at <https://www.business.qld.gov.au/running-business/environment/licences-permits/rehabilitation/security-deposit>

Progressive Certification of Rehabilitation

Your FA calculation is based on maximum disturbance open at any one time. In order to comply with both your FA held and the standard conditions, you must have your rehabilitation work progressively certified. This entails lodging an application for progressive certification and a rehabilitation report with the Department of Environment and Science for approval.

This can be lodged at any time throughout the project but is generally better accepted post wet season.

If you have any questions in relation to your environmental authority or project compliance, you can contact the Cairns office by email to escairns@des.qld.gov.au.

For enquiries relating to applications and invoices, contact should be made to Permits and Licensing on 1300 130 372 (option 4) or email palm@des.qld.gov.au.

Comprehensive information in relation to all aspects of your environmental authority applications can be located on the business portal at <https://www.business.qld.gov.au/running-business/environment/licences-permits>.

Forms and Fees can be located online at <https://www.business.qld.gov.au/running-business/environment/licences-permits/forms-fees>.

Free Mapping Tools in Queensland

The Queensland government provide a number of free mapping resources to industry and the general public. In my opinion, they are leaders for free resource information provision in Australia. I have provided a number of links to free data sources, the links generally take you to the home pages where you can read more information and in some cases access guides or help to get you started. All of the systems below have their benefits and the one you choose will ultimately depend on what your intended end use is.

Queensland Globe

Queensland Globe is an online interactive tool that turns physical, geographical and spatial data about a particular location into map format. Use the Globe to access hundreds of spatial data layers on Queensland roads, property and land parcels, topography, mining and exploration, land valuations, natural resources (vegetation, water, soil etc.) and more.

<https://www.business.qld.gov.au/running-business/support-assistance/mapping-data-imagery/queensland-globe/using>

Mines Online Maps

MinesOnlineMaps makes it easy to identify resource opportunities across the state by letting you view, query, analyse, extract and print spatial information about the mining and resources industry.

<https://www.business.qld.gov.au/industries/mining-energy-water/resources/minerals-coal/online-services/minesonlinemaps>

Hot Tip: Mines Online Mapping works best with Internet Explorer as Silverlight is required

QTopo

Topographic maps are detailed representations of natural and man-made features that appear on the Earth's surface. With QTopo, you can view Queensland's topography online and download maps as PDFs or PNG files.

Mobile device site: <http://qtopo.dnrm.qld.gov.au/mobile/>

Desktop computer site: <http://qtopo.dnrm.qld.gov.au/desktop/>

Hot Tip: QTopo works best with Internet Explorer as Silverlight is required

QSpatial

QSpatial, the Queensland Spatial Catalogue, gives the public access to view and download geospatial data and information to use with your GIS software.

<https://www.business.qld.gov.au/running-business/support-assistance/mapping-data-imagery/data/qspatial>

QDEX

The Queensland mining and exploration Map Collection is available from QDEX Data and contains the following categories: geochemistry, geology, groundwater, industrial rock, mines, mineral occurrences, resources.

The collection is currently being populated, beginning with the geoscience collection. Over time the collection should grow to include more than 10,000 current and historical map products.

<https://www.business.qld.gov.au/industries/mining-energy-water/resources/minerals-coal/online-services/qdex-data>

Aus Tin resumes operations at Granville project

Source: Ewen Hosie – Australian Mining

Aus Tin Mining has marked a return to processing operations following the completion of a new tailings storage facility at the Granville tin project in Tasmania.

The storage facility's lining has been completed and the base is being covered with reprocessed tailings in preparation for ore from the nearby Granville East mine.

Aus Tin constructed the liner for the storage facility in-house as opposed to using civil and mining contractor Jemrok — employed by the company to provide tailings works in April last year — “to prevent further delays”, according to a December announcement by the company.


The tailings storage facility was the final major permit condition of the expansion, and its completion allows the company to concentrate on increasing its tin concentrate production.

Aus Tin's project is around 20 kilometres north of Zeehan. It lies within the Heemskirk tin field, the same region where the large Renison tin joint venture (JV) between Metals X and Yunnan Tin Group is located.

The Renison project increased its mineral resource by 6.25 per cent in August last year to 16.44 million tonnes of ore for 215,700 tonnes of contained tin.

Tasmania's mining sector was worth \$1.82 billion in 2016-17 and tin is a particularly valuable export for the state.

Mineral extraction and processing represents Tasmania's largest export industry, accounting for over 50 per cent of shipped exports.

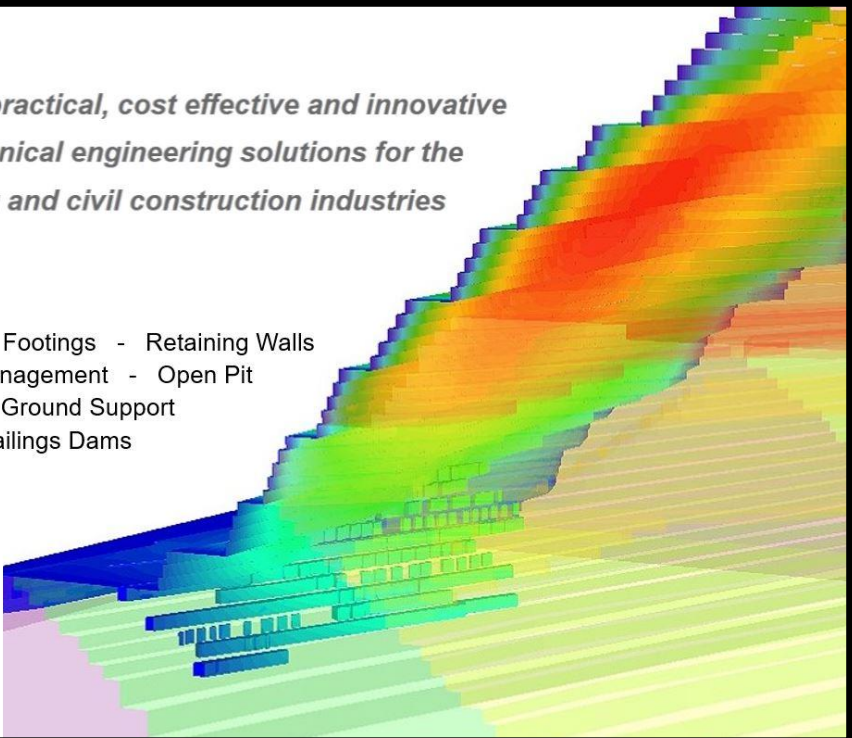


*Providing practical, cost effective and innovative
geotechnical engineering solutions for the
mining and civil construction industries*

Site Investigations - Foundations & Footings - Retaining Walls
Slope Stability - Rock Fall Management - Open Pit
Underground Mining - Ground Support
Waste Dumps and Tailings Dams

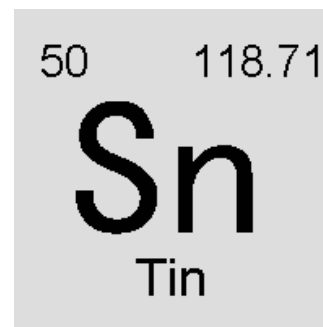
The only geotechnical and rock
engineers in the Far North who
specialize in your mining needs!

W: www.geckogeotech.com
E: info@geckogeotech.com
M: 0497 377 228



Mineral in focus - Tin

Compiled by: Claire Mackney



Uses

Tin has many uses. It takes a high polish and is used to coat other metals to prevent corrosion, such as in tin cans, which are made of tin-coated steel. Alloys of tin are important, such as soft solder, pewter, bronze and phosphor bronze. A niobium-tin alloy is used for superconducting magnets.

Most window glass is made by floating molten glass on molten tin to produce a flat surface. Tin salts sprayed onto glass are used to produce electrically conductive coatings.

The most important tin salt used is tin chloride, which is used as a reducing agent and as a mordant for dyeing calico and silk. Tin oxide is used for ceramics and gas sensors. Zinc stannate (Zn_2SnO_4) is a fire-retardant used in plastics.

Some tin compounds have been used as anti-fouling paint for ships and boats, to prevent barnacles. However, even at low levels these compounds are deadly to marine life, especially oysters. Its use has now been banned in most countries.

Natural Abundance

Tin is found principally in the ore cassiterite (tin oxide). It is mainly found in the 'tin belt' stretching through China, Thailand and Indonesia. It is also mined in Peru, Bolivia and Brazil and Australia.

History

Tin had a direct impact on human history mainly on account of bronze, although it could be used in its own right, witness a tin ring and pilgrim bottle found in an Egyptian tomb of the eighteenth dynasty (1580–1350 BC). The Chinese were mining tin around 700 BC in the province of Yunnan. Pure tin has also been found at Machu Picchu, the mountain citadel of the Incas.

When copper was alloyed with around 5 per cent of tin it produced bronze, which not only melted at a lower temperature, so making it easier to work, but produced a metal that was much harder, and ideal for tools and weapons. The Bronze Age is now a recognised stage in the development of civilisation. How bronze was discovered we do not know, but the peoples of Egypt, Mesopotamia, and the Indus valley started using it around 3000 BC.

Future

A number of tin leases are still current in Far North Queensland and there is interest expressed in reviving the tin industry here if an appropriate mill is established and the cost of shipping to a port or smelter is not cost prohibitive. The market price for tin is currently sitting around \$21,000 tonne USD.

Source: <http://www.rsc.org/periodic-table/element/50/tin>

FOR SALE/WANTED

FOR SALE

235 Caterpillar Excavator

New reconditioned motor (under 20 hours). Walking gear needs work- spare idler, rollers and 2x hydraulic pumps.

\$30,000.00 ono. Located near Palmer River.

Call 0405 112 154 or (07) 4060 2267.



GOLD MINING LEASE FOR SALE

9 ha granted alluvial mining lease near Groganville, in the Palmer Goldfields area.
Good Access. Permanent Water.

Phone: (07) 4095 3324
Mobile: 0448 761 743

WANTED TO BUY

Small 2x1 or 2x2 jig or similar for cleaning up gold concentrate.

Please contact Owen
Ph: 07 4067 4267

FOR SALE

Zinc Blocks for Tin Testing

\$25 ea

Contact Tony King on 07 4096 2185

WANTED TO BUY

TIN CONCENTRATES

FOR MORE INFORMATION
PLEASE CONTACT
MICHELE ON 4093 0052 OR
GRAHAM ON 0438 726 854

WANTED TO BUY

2 OF
6' BY 3' PAN AMERICAN JIGS
NO RUST
PHONE KEN WILSON 0428 980 079

WANTED TO BUY

Do you have drums of tin tucked away in your shed?

Are you producing tin concentrates in North Queensland?

Are you looking to start producing tin in North Queensland?

If you have tin concentrates that you would like to sell, please make contact per below.

Desmond Looi
Director/Owner of
LBP CONSOLIDATED (M) PLT
(Selangor, Malaysia)
Tel: +6019-2618230
Email: lbp112@gmail.com

Do you have an Obligation to Report Associated Water Take?

Section 334ZP of the *Mineral Resources Act 1989* requires that the holder of a mineral development licence or mining lease must report the volume or estimated volume of associated water taken.

What is associated water?

The holder of a mineral development licence or mining lease may take or interfere with underground water in the area of the licence or lease if the taking or interference happens during the course of, or results from, the carrying out of an authorised activity for the licence or lease. Underground water taken or interfered with in this way is associated water.

Examples of associated water:

- Mine dewatering of underground water to the extent necessary to achieve safe operating conditions in the mine;
 - Water pumped from an open pit in a mine;
 - Water taken by a water bore established for the purpose of dewatering a mine;
 - Groundwater ingress to underground mines and mine pits, surface mines and rehabilitated surface mines;
- Taking underground water as a result of evaporation from an open mine pit;
- Water vapour in ventilation airflows

What is not associated water?

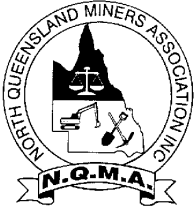
- Entrained water contained within the mined ore that was not added to the ore and does not drain from it;
- Seepage inflows derived from rainfall on in-pit overburden in open cut mines.

Flags that Indicate that a Holder of a Mining Lease may need to Report

- Does the mine pump water from the pit or underground for dewatering purposes?
- Is pit water evident for months of the year in the mine?
- Is pit water evident during normal operations in the mine pit on a regular basis?
- Does the mine intercept water bearing formations during its mining operations?
- Is the mine large (for example, pit area >70ha)?

If any of the above questions were answered 'yes' in relation to a particular mine, then further investigation may be warranted. A calculation spreadsheet entitled "*Estimating a Tenure Holder's Associated Water Take*" can be completed to identify whether there may be an obligation to report associated water taken. Contact 13 71 07 or email Resources.info@dnrme.qld.gov.au for further information.

If it is identified that a tenure holder is taking greater than 2ML of associated water, reporting is required. For further information on reporting information and templates, go to www.business.qld.gov.au and search for "water reporting for coal and mineral activities".



NORTH QUEENSLAND MINERS' ASSOCIATION INC.

ABN 76 525 585 093

APPLICATION FOR MEMBERSHIP

I/We.....
the undersigned, being an eligible person, partnership, or company, hereby apply for Membership of the North Queensland Miners' Association Inc. (See eligibility clause below)

BUSINESS NAME.....

POSTAL ADDRESS.....

..... POSTCODE.....

CONTACT PERSON.....

Daytime Phone: E-mail:

Number and location of mining tenement/s held or association with mining industry

.....
.....

I/We hereby agree to comply with the Rules and Regulations as prescribed in the Constitution of the North Queensland Miner's Association Inc.

☐ **Full Membership.** Enclosed herewith is Annual Membership Fee of **\$100.00.**

Eligibility for Membership: 'Any person, partnership or company who: is actively involved in mining or prospecting; holds or has an application for any mining tenure allowable under the Queensland Mineral Resources Act 1989 or any Act that replaces it; has a tenement before the Land and Resources Tribunal; or has a direct professional interest in the mining industry.'

☐ **Corporate Membership.** Enclosed herewith is Annual Membership Fee of **\$250.00.**

Eligibility for Membership: 'Any company which: is actively involved in mining or prospecting; holds or has an application for any mining tenure allowable under the Queensland Mineral Resources Act 1989 or any Act that replaces it; has a tenement before the Land and Resources Tribunal; or has a direct professional interest in the mining industry.'

☐ **Associate Membership.** Enclosed herewith is Annual Membership Fee of **\$40.00.**

Eligibility for Associate Membership: 'Any person or partnership who has interests in fossicking for gold, gems and metals; or any company or individual providing goods or services to the mining industry but not directly involved in mining'.

Account details for direct deposit: North Queensland Miners Assoc. Inc.
BSB: 633-108 Account: 128702172

SIGNED

DATE/...../.....

Please send Application Form to: NQMA Treasurer
PO box 1548
Mareeba Qld 4880
michelemobbs@westnet.com.au