



# THE MINER'S RIGHT

The North Queensland Miner's Association Incorporated  
Representing Miners, Prospectors and Associated Industries

July 2018

**PRESIDENT:**

Fiona Thomas  
Ph: 07 4056 6516

**VICE-PRESIDENT:**

James Said  
Ph: 0427 569 848

**SECRETARY:**

Michele Mobbs  
Ph: 07 4093 0052

**TREASURER:**

Claire Mackney  
Ph: 0488 299 296

**NATIVE TITLE  
OFFICER:**

Paul Crossland  
Ph: 07 4095 3324

**ADMINISTRATION:**

Lyn Byrne

**EDITOR:**

Claire Mackney

**WEBSITE:**

[www.ngma.com.au](http://www.ngma.com.au)

[www.facebook.com  
/NorthQueensland  
MinersAssociation](https://www.facebook.com/NorthQueenslandMinersAssociation)

**Next Meeting:**

Monday  
9 July 2018  
Mareeba Leagues  
Club 12:30pm

## A message from the Editor

By Claire Mackney

It's that time of year again! The weather is beautiful, if not a little cold...

Soon the mailboxes will be filling up with requests for reporting.

The Annual Safety and Health Census forms are due for lodgement by 20 July 2018.

All mining rent is due for payment on 31 August 2018. Late payments incur a 15% penalty which is due and payable by 1 December 2018.

The statistical and royalty returns are both due for lodgement at the end of September.

Changes will be implemented if the proposed Mineral and Energy Resources (Financial Provisioning) Bill 2018 goes ahead. This will see amendments to the way in which financial assurances are calculated and held.

Two discussion papers, *Achieving improved rehabilitation for Queensland: other associated risks and proposed solutions* and *Achieving improved rehabilitation for Queensland: addressing the state's abandoned mines legacy* were released in May for review and submission. A workshop is being held in Cairns on Thursday 28<sup>th</sup> July 2018 to discuss the content of these papers prior to the close of submissions on 16 July 2018.

As Heraclitus said, "the only thing that is constant is change".

## Save the date

**28<sup>th</sup> July 2018** - Financial Assurance Discussion Papers - Cairns Workshop

**9<sup>th</sup> July 2018** - NQMA General Meeting - Leagues Club Mareeba

**27<sup>th</sup> July 2018** - Palmer Goldfields Reserve Stakeholder Meeting, venue to be advised.

**11<sup>th</sup> August 2018** - NQMA Gold Panning Championships - Mareeba

# The NQMA and what do they do for you?

*By Vicky Lake*

The North Queensland Miners Association (NQMA) has two important elements that determine how strong and successful the organisation will be.

The first one is you, the Miner, and your annual Membership. The annual Membership fee raise funds for the NQMA's continued financial viability. The purpose of raising this revenue is to finance NQMA Members lobbying the State Government to protect the mining industry in North Queensland, to finance administration costs as well as other expenditures incurred. For example, engaging an Auditor at the end of the financial year and paying for a membership with the Association of Mining and Exploration Companies (AMEC) which enables us to maintain a position in the working group to represent the interests of our own membership.

Although the membership base contributes a significant amount to our funding base each year, it is not the only avenue that NQMA have to raise funds. The annual Calendar is a valuable instrument in keeping Members informed of NQMA meeting dates, as well as other relevant information, whilst also raising a small amount of revenue. Our major fundraising event of the year is the annual NQMA Gold Panning Competition, which not only raises revenue but is instrumental in maintaining a positive public profile with the general public.

The second element of the NQMA is the Executive Committee, who are elected at the Annual General Meeting (AGM) every year on the second Monday of September.

I have been on the Executive Committee for the last 10 years and have witnessed firsthand the dedication of the Executive Committee Members in protecting the fundamental rights of the North Queensland mining industry. Members of the Executive Committee were successful in lobbying DEHP/DES to apply the annual EA fee to mining projects as opposed to every ML, saving Miners thousands of dollars. The Executive Committee Members liaise with the native title parties and other relevant bodies to negotiate the State supported ILUA's when due.

Executive Committee Members were successful in lobbying QFES to accept Statutory Declarations on vacant ML's, again saving us Miners thousands of dollars each year. The Executive Committee will continue to lobby QFES to get the EML reduced to an equitable levy that is transparent, fair and just. The Executive Committee continuously liaise with Government departments and organise information sessions so that the Miner may be kept updated on ever changing legislative, regulatory and policy changes.

The above highlights some of the most important issues in recent history but there are many more that the Executive Committee have been successful in addressing. We also keep the Members updated via meeting minutes, email communications, the Miners Right, the webpage & Facebook.

Your experience and voice are important, and we encourage you to come along to our general meetings and have your say. You may also like to consider becoming an Executive Committee Member and assisting us with the discussions with various government agencies and other stakeholders.

One of our focuses this year is to strengthen the NQMA membership base, which in turn will keep NQMA strong. So, it is that time of the year again for Membership renewals and I hope that, through this article, there may be a better understanding of how important NQMA really is for the Miners and the North Queensland mining industry today, tomorrow and well into the future.

## Target Gully – An Abandoned Mine good news story

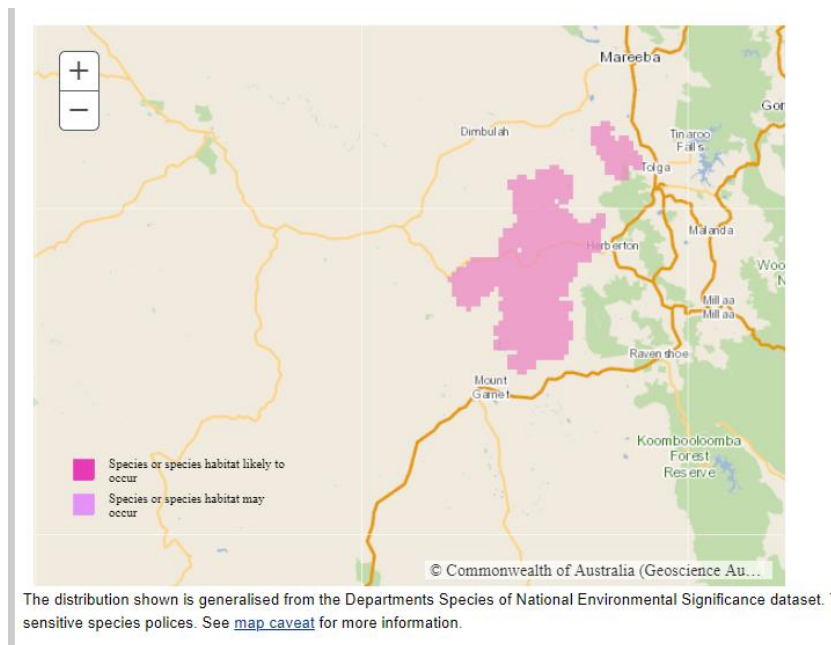
By Claire Mackney

We often see negative media in relation to mining in Australia, and particularly when they relate to the topic of abandoned mines.

Recently a positive story came out of the Target Gully abandoned mine remediation project located near Irvinebank with the discovery of hundreds of plants identified as *Acacia purpureopetala*, commonly known as the purple wattle, located around an old tailings dam.

This wattle is the only Australian wattle with purple flowers. It grows on rocky slopes in north-eastern Queensland and flowers between May and September. *A. purpureopetala* is listed on the Environment Protection and Biodiversity Conservation Act list of threatened flora as being critically endangered and it was previously believed that there were only approximately 500 plants left in the wild, including at Bush Heritage's Yourka Station in Queensland.

It's important to acknowledge the work of the local traditional owners, the Bar-Barrum People in the remediation work and vegetation surveys.



Photograph by: Murray Fagg

## Congratulations

On behalf of the North Queensland Miners Association, I would like to congratulate Fiona Abbey and Reuben Thomas on their marriage and wish them a long life filled with love, laughter and happiness.

# Respirable Crystalline Silica (RCS) Monitoring

In the last 12 months, the Department of Natural Resources, Mines and Energy have been looking at monitoring data for Respirable Crystalline Silica (RCS).

The requirement for monitoring RCS will be followed up with small operators in the near future. More information can be obtained from website <https://www.dnrme.qld.gov.au/business/mining/safety-and-health/alerts-and-bulletins/mines-safety/management-of-dust-containing-crystalline-silica-quartz>.



## Respirable crystalline silica in mineral mines and quarries

QGL02 Guideline for management of respirable crystalline silica in Queensland mineral mines and quarries is out NOW. It provides advice to SSEs on how to monitor worker exposure to respirable crystalline silica and manage health surveillance requirements.

Find it at <http://bit.ly/2w4g23s>

### Sample



Compulsory Respirable Crystalline Silica dust sampling

### Report



Single exceedances above OEL must be reported

### Notify



Silica related disease must now be reported

### Watch



Compulsory respiratory health surveillance for some groups of workers

Current occupational exposure level for RCS **0.1mg/m<sup>3</sup>**



All health surveillance must be supervised by an Appropriate Doctor



Statistical analysis of exposure monitoring data is required every **2 years**



Minimum sampling and frequency requirements (or as directed by an Occupational Hygiene Inspector of Mines)



Competencies required for exposure monitoring activities – Occupational Hygienist (MAIOH) and Occupational Hygiene Technician



Records of exposure monitoring and health surveillance must be kept for **30 years**



New definition and competencies introduced for 'Appropriate Doctor'



Monitoring must be performed as per Australian Standard 2985



Adopts the recommendations of the Monash Review applicable to mineral mines and quarries



Online templates provided for Health surveillance (respiratory) assessments and reports



## **NQMA Gold Panning Championships 2018**

It's that time of the year again! The NQMA Gold Panning Championships will be held at Centenary Park Mareeba on Saturday 11th August. Volunteers are needed as usual for set up on Friday afternoon from approx. 1pm, helping on the Saturday and assisting with the clean up after the event. Allocation of tasks will be worked out at the next meeting.

There will be events ranging from Juniors to Veterans and Teams. This is also a great day to promote the mining industry, for members to catch up and families to come along and enjoy the outside event.

There are excellent prizes in all events including a Gold Monster 1000 metal detector courtesy of Leading Edge Electronics Mareeba and Minelab. Garrett, Minelab and Leading Edge will have stalls with all the latest equipment for miners and prospectors on display. The regular gem and treasure stalls will also be attending.

The Gold Rush is taking on a new format and will run during the day to encourage more crowd participation.

Mareeba Scouts will be holding a sausage sizzle/tea & coffee/cold drinks.

The gold nugget jewellery raffle this year features unique pieces designed by Atherton Tableland Craftsman Mr Barry Jarman. Tickets are selling fast at many outlets including Leading Edge, Mareeba Historical Society, Mareeba Heritage Centre, Tableland Batteries, NQMA website and members.

I would like to thank Barry for his generous support of the NQMA over many years.

Lyn Byrne  
Gold Panning Co-Ordinator

If you would like to sponsor an event or need any more information on the day please contact :  
Lyn (07) 40914905 or email [glbyrne351@bigpond.com](mailto:glbyrne351@bigpond.com)

NQMA extends thanks to sponsors of the Gold Panning Championships

**Leading Edge Mareeba    Minelab    Garrett**  
**Bradfords Coins & Stamps    4 x 4 FNQ Tolga    Tonkin Steel**  
**Atherton Bolts 'N' Tools    Golden Spear Mine**  
**Tableland Pumps & Pipes    Barry Jarman**  
**Kim Hillier Turbo Pans**

# Emergency Management Levy Update

By Vicky Lake

A NQMA – EML delegation attended a Teleconference with QFES on the 15<sup>th</sup> June.

As a result of that meeting QFES stated the following. That they are conscious of the issues NQMA have raised and are keen to find an appropriate solution.

The revenue raised to finance the running of QFES comes primarily from the EML.

Any adjustments made to the Levy cannot have an unsustainable flow on effects to the QFES budget. There is no Legislative power to allow QFES to issue a moratorium.

Due to the complexities of the structure of the Levy QFES can't address the NQMA issue as an isolated case and have to deal with the context of the entire Levy.

There is work being done in the back ground but QFES could not devolve any information as it has to be passed through various levels of Government and advised that NQMA can be assured that the matter is being progressed to work towards a solution. QFES wants to put a priority on a workable model for NQMA circumstances. They want to go to Government with a factual argument not a motive argument.

We stated at the meeting that we understand the issues QFES face. However, this issue has been on the table for over 4 years and we advised that if resolving the EML issue had a reasonable time frame NQMA could work with that. But if our proposal could not be implemented then to attain a structure that would fit into the QFES model and other Government departments would be a long and onerous task and, in the meantime, the smaller mining operations would continue to be financially disadvantaged. So, we requested that QFES advise Local Government to apply Levy group 2 in the QES regulation to all Mining tenure in the interim.

We found it hard to accept the argument that any change needs to be "revenue natural" given the fact that the revenue raised from the EML- Extractive Industry is a false representation in the first place i.e. – approximately 2000 prescribed mining Claims in other Local Government are paying 'Vacant Land' – approx. \$30 as opposed to the category- Industry Extractive- Levy Group 8 approx. \$1,500 per year. This is just one anomaly. Following this there was a discussion in regard to the inconsistency of how Local government apply the Levy to ML & MC. We reiterated to QFES the financial burden this EML is having on the small mining operations and we don't expect that this is difficult to implement. QFES gave an undertaking to revisit the information available on the Government web pages and to review whether the NQMA proposal could be implemented.

In summarising it was made clear that QFES have to determine if the NQMA proposal could be implemented. If not, the time frame to achieve a resolution would be extensive. In which case it would only be reasonable and fair for QFES to investigate an avenue that will alleviate the financial burden that is perversely affecting the Miners who are Standard Operations.

The NQMA Executive Committee will review what action should be taken next at the NQMA meeting on 9<sup>th</sup> July 2018.

If you have any comment or advice, please email me at [vickylake074@bigpond.com](mailto:vickylake074@bigpond.com)



## JVIB – Our passion for insurance ensures your peace of mind.

Let your local JVIB broker compare quotes from their range of insurers to find the right policy for you. We are here to help with your insurance questions so give us a call today.

**CAIRNS** Level 1, 108 Mulgrave Road, Cairns  
**MAREEBA** 113 Byrnes Street, Mareeba  
**ATHERTON** Unit 1/1-3 Mabel Street, Atherton

**Phone:** (07) 4040 4444  
**Email:** [jvib@jvib.com.au](mailto:jvib@jvib.com.au)  
**Website:** [www.jvib.com.au](http://www.jvib.com.au)



**JOE VELLA**  
INSURANCE BROKERS



Australian Mining  
and Exploration  
Title Services

Specialists in tenement management  
and administration Australia wide.

Shop 3, 165 Byrnes Street, Mareeba QLD 4880

07 4092 6431  
[www.amets.com.au](http://www.amets.com.au)

Please note that the NQMA has recently changed its mailing address to:

**The Secretary**  
**PO box 1548**  
**Mareeba Qld 4880**

Please ensure that all future mail is forwarded to this address.

### Editors Notes:

The Miners Right is usually published every February, May, July, September and November prior to the NQMA general meetings. The MR is a great way to share information within our mining community. We are always looking for contributions to make the newsletter interesting and informative. If you would like to see something included or you can contribute stories, historical information or general mining info please contact the editor. Members can also advertise their business, items for sale or wanted items without charge. Please send requests via email to [Claire.Mackney@bigpond.com](mailto:Claire.Mackney@bigpond.com) or phone through on 0488 299 296.

**Disclaimer:** *While every effort is made to ensure that information provided in the Miners Right is correct, it should not be relied on when making decisions in relation to your business. The NQMA committee recommends that appropriate professional advice should be sought.*

## Ok Tedi – Finding a Mine. Fifty years ago.

By Chris Larkin

On the 28<sup>th</sup> of March 1967, I arrived in Lae in the then Territory of New Guinea, having flown from Melbourne in a Lockheed Electra. I was 19 years old. I was to meet up with my older brother David who had a trucking business carrying freight and fuel from Lae on the coast up to the Western and Southern Highlands towns of Mount Hagen and Mendi. Stepping off that plane at Lae was like stepping into a sauna at full blast.

Before I went to New Guinea, I had been studying geology at the old Ballarat School of Mines and Industries in Victoria.

After getting up to the cooler Highlands I soon scored the job of aircraft refueller at the new Mount Hagen airport at Kagamuga, working for Ivor Manton, the tea and coffee magnate who had the Mobil Oil distributorship in the Western Highlands. While I was busy pumping fuel into all kinds of planes there, a missionary owned Cessna went missing way out west near the Indonesian border, in the Star Mountains. The Department of Civil Aviation seconded me to go out there in an RAAF Caribou full of volunteers to be the official search aircraft refuelling manager. I had to manage a lot of 200 litre Avgas drums and one hand operated pump. Pretty fundamental.

An American copper exploration company, Kennecott, had donated their chartered Bell 47 helicopter and crew for the air search, based at Telefolmin. Early on during the search, I became friends with the observer and when he told me they were prospecting for copper I told him I knew about copper and minerals, having been at the Ballarat School of Mines. They had an office in Mount Hagen, and he invited me to drop in there when the air search was finished. We searched for the missing plane for ten days and did not find it. It still has not been found to this day.

I visited Kennecott Copper's office in Mount Hagen and was immediately offered a job as a field assistant. At about double the pay I was already receiving how could I refuse? A month later I was on the payroll and was sent bush. We were systematically stream sediment sampling just about every drainage and tributary of every river and stream in the Western Highlands, covering hundreds of square kilometres on foot, sometimes with a helicopter to supply us with food and to take the samples out. We didn't find anything significant.

Then in mid-1968, the company took out Prospecting Area 28P (P for Papua) in the far west of the Territory of Papua, starting at about the Strickland River gorge west of Porgera, and ending in the Star Mountains at the Indonesian border, and bounded to the north by the New Guinea border. We did our exploration work all by helicopter this time, working from east to west. In July, we moved from our base camp at Oksapmin, to a new base at the government Patrol Post at Olsobip. The terrible weather and horrible flying conditions restricted operations enormously. A lot of time spent reading books. By this time, we had two helicopters, a bog-standard petrol-powered Bell 47, (two passengers) and the first turbine-powered helicopter in PNG, a Bell 204 Jetranger (3 passengers).

Things were looking pretty ordinary as far as finding new copper deposits were concerned. We were covering a lot of country and exploring a region which was still not officially mapped. There were big gaps in the maps with the words "Unexplored" printed on them. There were a few tantalising sniffs when we found cobbles and boulders in the headwaters of the Fly River containing sulphide minerals including chalcopyrite.

## Ok Tedi – Finding a Mine. Fifty years ago continued...

Then on July the 13<sup>th</sup> in 1968, my diary records;

“Shades of El Dorado! We manage to squeeze through the clouds and in the upper Alice River we find some pretty encouraging lumps of rock. Very much cupriferous”.

We had found the skarn outcrops that surrounded the Ok Tedi porphyry copper deposit. I was in the Jetranger with geologist Doug Fishburn and field assistant Tom Harvey. The other helicopter, the Bell 47, was carrying geologist John Felderhof. Our crew found the southernmost skarn outcrops, and John had found similar outcrops to the north.

When we got back to Olsobip that afternoon, it was a “Guess what we have found “situation. And what we had all found on the same day was a fabulous, previously totally unknown, deposit of minerals which eventually became the Ok Tedi copper and gold mine which is still operating today, fifty years later. Before mining started, the metal endowment included 4.8 million tonnes of copper metal, and 490 tonnes of gold. Not a bad find!

This success was not without pain. A helicopter crash killed the pilot Dave Binnie and passenger Robbie Robinson, the guy I had met in the air search based at Telefolmin. Doug Fishburn, the other passenger was seriously injured and was the only survivor. We all contracted malaria and dengue fever. I had malaria for years afterwards, including in Tasmania where I had the medical profession baffled. Occupational health and safety in those days amounted to your own desire not to get hurt, in other words, self-preservation.

I went on to build the first drill site located in Sulphide Creek and get the Canadian Longyear drillers settled in a very rudimentary bush camp before my annual leave took me back to Australia. Because of the National Service ballot laws during this Vietnam War era, I was unable to return to New Guinea when my leave was over. Kennecott transferred me to Queensland, and I have been here ever since.

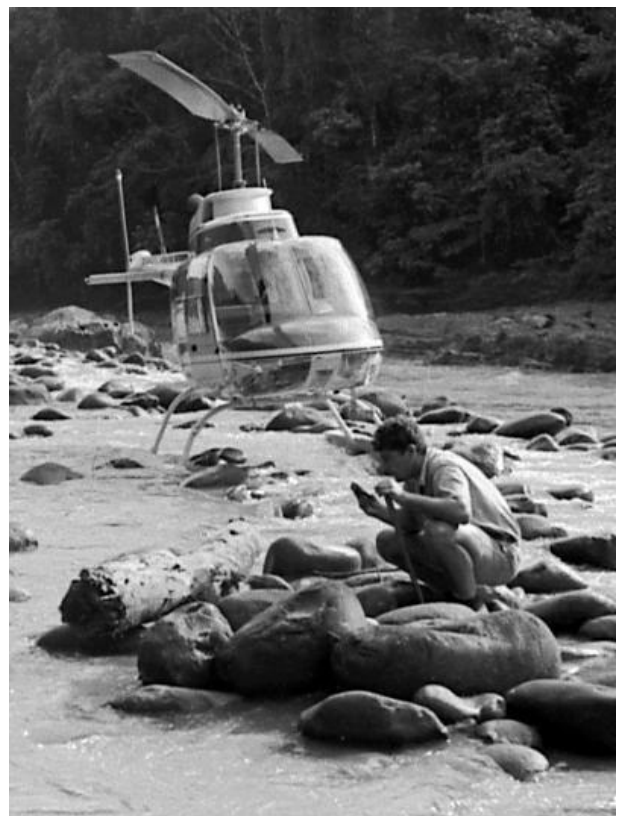
I distinctly remember Doug Fishburn taking me aside one day after the discovery and telling me that:

“You only get one chance in a lifetime to find something like this, you might as well give up studying geology now and try something else...”

I didn't.

Chris Larkin  
Atherton – 7 June 2018

*This is the only photograph taken on the day of discovery of the Ok Tedi deposit, July 13, 1968. It shows geologist Doug Fishburn examining float for mineralisation in the bed of the Alice River (Ok Tedi in the Min language). Photo: Chris Larkin.*



# FOR SALE/WANTED

## GOLD MINING LEASE FOR SALE

9 ha granted alluvial mining  
lease near Groganville, in the  
Palmer Goldfields area.  
Good Access.  
Permanent Water.

Phone: (07) 4095 3324  
Mobile: 0448 761 743

## FOR SALE ML 20472

Alluvial Mining Lease located  
in the White Horse Area

## EPM 18117

10 sub blocks located on  
Mount Madden Dome  
covering the Buchanan hard  
rock with alluvial systems

Contact Buddy Kelly  
07 40602245

## Complete working electric mobile alluvial plant



\$100,000 incl.

Please contact Graham or Lyn Byrne on 07 4091 4905

## WANTED

Grease Blocks suitable for white metal bearings on a  
ball mill.

Contact Graham or Lyn on 07 4091 4905

## FOR SALE

Hopper and Plate feeder, 3.9m height at back, 3.4m height in front.  
Make a reasonable offer. Phone Jay on 0456 697 533



# FOR SALE/WANTED

Bedrock Mining and Exploring is an Australian owned and operated professional mining and exploration company. BME was established as an exploration and bulk sampling operation utilising GPR technology contracting to Australia gold producers for the mapping and sampling of subsurface Paleo, bedrock, reef and ground water formations.

BME are also purchasers of alluvial, reef, nuggets & gold bullion and currently based in north Queensland. Our buying program allows us to come to the seller, process and with the aid of furnace and XRF analysis equipment the true Au value whilst in the company of the seller thus allowing a genuine onsite purchase.

## WANTED GOLD

Bedrock Mining and Exploration offer onsite purchasing of Au

Utilising XRF analysing technology and mobile furnace allows us to offer a genuine price subject to the purity being offered along with instant payment.

For further information contact: [bedrockminingandexploration@gmail.com](mailto:bedrockminingandexploration@gmail.com) or Jed Hollis: 0468 969740

## FOR SALE

Currently Bedrock Mining and Exploration have surplus mining equipment from operations near Charters Towers. The equipment is available for sale with \$ or Gold.



1 x 2016 mobile test plant/trommel 25-30tph (unused)

\$70,000

# FOR SALE/WANTED

Currently Bedrock Mining and Exploration have surplus mining equipment from operations near Charters Towers. The equipment is available for sale with \$ or Gold.



1 x 2008 LC29 Volvo Excavator Mining Spec  
(Good Clean Unit) with two heavy duty buckets  
\$90,000



1 x Transtank mines rated 1000 litre fuel trailer \$15,000

For further information contact:

[bedrockminingandexploration@gmail.com](mailto:bedrockminingandexploration@gmail.com) or

Jed Hollis: 0468 969740



2 x Conveyor/Radial Stackers 18.5m with 900w belt (New Unused units, currently flat packed for transport)  
\$40,000 Each

# ADVERTISING



Contact: **Reuben Thomas & Fiona Abbey**

Phone: 07 40566516

Mobile: 0407080673

"Tenure Management, Pegging, GPS, Mapping"

Postal Address: PO Box 14202, Mount Sheridan Qld 4868

EMAIL: [reuben@miningrpservices.com.au](mailto:reuben@miningrpservices.com.au) or

[fiona@miningrpservices.com.au](mailto:fiona@miningrpservices.com.au)

Atherton Mower and Chainsaw Services

55 Tolga Rd, Atherton 4883

Ph: (07) 40 917 499

Fax: (07) 40 917 448

[sales@athertonmowers.com.au](mailto:sales@athertonmowers.com.au)

[www.athertonmowers.com.au](http://www.athertonmowers.com.au)



*Locally Owned and Operated*

**FOR ALL YOUR FUEL  
AND OIL NEEDS**

SERVICING FAR NORTH QUEENSLAND

Ph: (07) 4098 8222

**Kim Hillier  
Geologist**

Located in Mareeba.

Extensive experience in the Palmer, Hodgkinson and Georgetown areas with both hard rock and alluvial operations. Tenement administration, ML and EPM valuations, exploration surface work and drilling programs. Ph: 0428 250 364

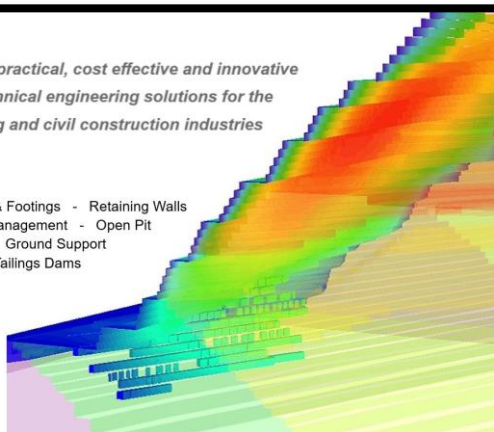


Providing practical, cost effective and innovative  
geotechnical engineering solutions for the  
mining and civil construction industries

Site Investigations - Foundations & Footings - Retaining Walls  
Slope Stability - Rock Fall Management - Open Pit  
Underground Mining - Ground Support  
Waste Dumps and Tailings Dams

The only geotechnical and rock  
engineers in the Far North who  
specialize in your mining needs!

W: [www.geckogeotech.com](http://www.geckogeotech.com)  
E: [info@geckogeotech.com](mailto:info@geckogeotech.com)  
M: 0497 377 228



**TURBOPAN**  
DELIVERING BETTER GOLD PANNING

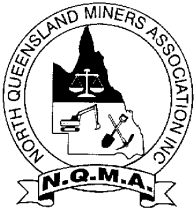
Turbopan™ gold pan is a tool for the prospector and artisan mining involved in small scale mining. Whether you're a hobbyist out looking for a run or crevice filled with gold or gold panning for a living in a developing country, Turbopan is the right piece of prospecting equipment to get the gold quickly and easily.

Kim Hillier – 0428 250 364

**WANTED TO BUY**

**TIN CONCENTRATES**

**FOR MORE INFORMATION  
PLEASE CONTACT  
MICHELE ON 4093 0052 OR  
GRAHAM ON 0438 726 854**



# NORTH QUEENSLAND MINERS' ASSOCIATION INC.

ABN 76 525 585 093

## APPLICATION FOR MEMBERSHIP

I/We.....  
the undersigned, being an eligible person, partnership, or company, hereby apply for Membership of the North Queensland Miners' Association Inc. (See eligibility clause below)

BUSINESS NAME.....

POSTAL ADDRESS.....

..... POSTCODE.....

CONTACT PERSON.....

Daytime Phone: ..... E-mail: .....

Number and location of mining tenement/s held or association with mining industry

.....

.....

I/We hereby agree to comply with the Rules and Regulations as prescribed in the Constitution of the North Queensland Miner's Association Inc.

- Full Membership.** Enclosed herewith is Annual Membership Fee of **\$100.00**.  
Eligibility for Membership: *'Any person, partnership or company who: is actively involved in mining or prospecting; holds or has an application for any mining tenure allowable under the Queensland Mineral Resources Act 1989 or any Act that replaces it; has a tenement before the Land and Resources Tribunal; or has a direct professional interest in the mining industry.'*
- Corporate Membership.** Enclosed herewith is Annual Membership Fee of **\$250.00**.  
Eligibility for Membership: *'Any company which: is actively involved in mining or prospecting; holds or has an application for any mining tenure allowable under the Queensland Mineral Resources Act 1989 or any Act that replaces it; has a tenement before the Land and Resources Tribunal; or has a direct professional interest in the mining industry.'*
- Associate Membership.** Enclosed herewith is Annual Membership Fee of **\$40.00**.  
Eligibility for Associate Membership: *'Any person or partnership who has interests in fossicking for gold, gems and metals; or any company or individual providing goods or services to the mining industry but not directly involved in mining'.*

Account details for direct deposit: North Queensland Miners Assoc. Inc.  
BSB: 633-108 Account: 128702172

SIGNED ..... DATE ...../...../.....

Please send Application Form to: NQMA Treasurer  
PO box 1548  
Mareeba Qld 4880  
Claire.Mackney@bigpond.com

# North Queensland Miners' Association presents the Annual Gold Panning Championships 2018

When:

**Saturday 11th August**  
**from 9 am**

(Register from 8 am)

Where:

Heritage Centre

**Mareeba**

(Next to the markets)



All age groups catered for.

From under 12's to over 60's



A great way  
to interest the  
kids in fossicking for GOLD!

Free entry to the photo competition. Photos must be related to the mining industry. Bring your photo to the event by 10 am.

1st Prize \$80

2nd \$60

3rd \$40

## Schedule of Events

09.00am Specialty Panning \*  
09.30am Under 12  
10.00 am Juniors 12 - 16  
10.30 am Novice Women  
11.00 am Novice Men  
12 noon Skilled Women  
12.30 pm Skilled Men  
01.00 pm Mayor presents Trophy  
Photo Competition Winner  
01.30 pm Veterans over 60 years  
02.00 pm Open  
02.30 pm Teams Challenge

## Other Things to Do

Stalls on Mining/Fossicking

Fun Panning Bay :

For just \$5 buy a parcel of sand and learn how to pan.

NQMA representative will show you how!

Guaranteed to find gold.

Ideal for the kids.

Major Prizes including a Gold Monster 1000 Metal Detector Courtesy Leading Edge Electronics Mareeba and Minelab. Check out their display at the Gold Panning. Supplying an extensive range of detectors and prospecting equipment.

Amazing Jewellery Raffles to be won.

( Superb Quality Jewellery Designed by Atherton Tableland Craftsman)

1st : Rare Crystal Gold Nugget Pendant Value \$1,600

2nd: Gold Nugget Pendant Value \$1,450

3rd: Pair Dropper Earrings Value \$1,100

Drawn Saturday 11th August 2018



**Trophies and excellent prizes to be won in all events**

**Keep hunger at bay by checking out the Sausage Sizzle**

**Come along for a great day out and support the north Queensland mining industry.**

For more information contact Lyn Ph (07) 40914905  
email: glbyrne351@bigpond.com