



THE MINER'S RIGHT

The North Queensland Miner's Association Incorporated
Representing Miners, Prospectors and Associated Industries

May 2018

PRESIDENT:

Fiona Abbey
Ph: 07 4056 6516

VICE-PRESIDENT:

James Said
Ph: 0427 569 848

SECRETARY:

Michele Mobbs
Ph: 07 4093 0052

TREASURER:

Claire Mackney
Ph: 0488 299 296

**NATIVE TITLE
OFFICER:**

Paul Crossland
Ph: 07 4095 3324

ADMINISTRATION:

Lyn Byrne

EDITOR:

Claire Mackney

WEBSITE:

www.ngma.com.au

[www.facebook.com
/NorthQueensland
MinersAssociation](https://www.facebook.com/NorthQueenslandMinersAssociation)

Next Meeting:

Monday
14 May 2018
Mareeba Leagues
Club 1:00pm

2018, A Year for Change

This year is shaping up to be a big year for change implementation by the Queensland State Government.

NQMA members and non-members alike are invited to attend an information session being held in Mareeba on Tuesday, 15th May 2018.

The information session is being held to advise industry of changes, some of which have already been implemented. Updates will be provided by the Mineral Hub, the Mines Inspectorate, the Minerals and Energy Resources Engagement & Compliance Unit and the Department of Environment and Science.

Some of the key topics to be addressed are as follows:

- Current and future financial assurance framework
- Land access changes
- Security for exploration and mining projects
- Guidance on mining lease terms and reporting requirements
- Native Title update
- Resource Safety and Health update

It's important that industry members attend these information sessions when they are held. Firstly, because you receive information directly from the department heads and secondly to show that we are still actively engaging in these discussions. If we don't attend the information sessions, the State may stop offering them.

The information session is to be held in the John Charles Room, 28 Peters Street, Mareeba on Tuesday 15th May 2018. Persons wishing to attend are requested to RSVP to MineralHub@dnrme.qld.gov.au by 9 May 2018.

Respirable Crystalline Silica (RCS) Monitoring

Some members may have received an email requesting provision of historical data for respirable dust and dust and respirable crystalline silica (quartz) for the years 2000 – 2018.

Advice from Samantha Forster, Principal Occupational Hygienist - DNRME is that if you do not hold data, please respond with that advice.

If you would like advice specific to your site, please contact Senior Principal Occupational Hygienist, Mark Desira on (07) 4447 9248. This is also a topic that will be discussed at the information session (details per above article).

AusIMM – FNQ Mining Round-up

AusIMM are holding their FNQ Mining Round-up on 24th May 2018. NQMA members and their guests are invited to attend. RSVP and cost details are provided in the table below.

AUSTRALASIAN INSTITUTE OF MINING AND METALLURGY FAR NORTH QUEENSLAND BRANCH FNQ MINING ROUNDUP THURSDAY 24th May 2018 PRELIMINARY PROGRAM (subject to change)			
Chair	Time	Topic	Speaker
	8:30	Coffee	
Rob Ryan	9:00	Welcome	Brett Duck, FNQ Branch Chair, AusIMM
	9:10	Opening address	James Purtil, Director General, DNRM
	9:30	Consolidated Tin - Update	Ralph de Lacy, CEO
	9:50	Tablelands Mining Group	Anuj Timblo (Exec GM)
	10:10	ADANI	to be advised
	10:30	First session discussion and questions	
Morning Tea			
John Nethery	11:10	Orrbodies - Drone Operations in the Industry	Tom Orr, Director
	11:30	MajorX - IRG Targets in the Georgetown & Towers Districts	Stewart Parker, Exploration Manager
	11:50	Resolute - Ravenswood Expansion Project & Exploration	Mark Lindsay, Regional Exploration Manager
	12:10	Auctus - Exploration Update - Chillagoe & Palmer Fault	Ian Hodkinson, Exploration Manager
	12:30	Second session discussion and questions	
Lunch (including Posters)			
Brett Duck	13:50	Specialty Metals International - Mt Carbine + Lithium in Chile	Dr Andrew White, Consultant
	14:10	Laneway - Agate Creek Project and Company update	Scott Hall, Exploration Manager
	14:30	Australian Mines - SCONI Project	Benjamin Hall, Managing Director
	14:50	Hill End Gold Ltd - Alumina from High Quality Kaolin	Graham Reveleigh, Managing Director
	15:10	Third session discussion and questions	
Afternoon Tea			
Graham Reveleigh	15:50	Glencore - Aurukun Project	Julian Farrugia, Project Manager
	16:10	Innovative moisture reduction via non-thermal drying	Paul Vermeulen, Vulcan Technologies, MD
	16:30	Mining and Exploration Roundup - The Others	Brett Duck, Director, Bremar Minerals PL
	16:50	Fourth session discussion and questions	
All local Branch Members are invited to stay for the AGM			

Tech Session will be at the Cairns Sheridan Hotel, Sheridan St., Cairns

Dinner will be at the Cairns Sheridan Hotel and Conference Centre, Sheridan St, Cairns, Guest Speaker James Purtil, DG, DNRM

Morning tea, lunch and afternoon teas are included in the \$20 fee for the day

[Please advise attendance at meeting and/or dinner to G Reveleigh on mining@ Cairns.net.au or 07 4033-1805](mailto:G.Reveleigh@ Cairns.net.au)

There will be a fee of \$50 for the dinner which includes wine.

All guests are welcome at the Day Sessions and at the Dinner

The Branch AGM will be held immediately on close of the sessions, prior to the dinner

Associated Water Reporting

After receiving a large number of N/A water reports from industry, the DNRME Water Policy team have made a decision to amend the guidelines to state that only permit holders who are taking more than 2 mega litres during the July to June reporting period will need to lodge a report.

As this requirement is self-monitoring, it is recommended that all holders of mining leases and mineral development licences read the guideline which can be found at https://www.dnrm.qld.gov.au/data/assets/pdf_file/0004/1256458/guideline-quantifying-volume.pdf to ensure that you are in compliance.

Templates for reporting can be found at <https://www.business.qld.gov.au/industries/mining-energy-water/resources/applications-compliance/lodging-statutory-reports/coal-minerals-reporting/water-reporting>.

Emergency Management Levy

QFES Executive Director- Ms. Gen Wilcox to attend NQMA 14th May meeting in Mareeba.

(QFES- Queensland Fire and Emergency Services)

The NQMA are committed to continue lobbying QFES to attain an equitable and transparent resolution to the contentious EML issue. NQMA Committee Members have liaison with QFES and the Government for the last 4 years.

Why, you may ask, has it taken so long to even achieve a proposed recommendation from QFES and the Government? To start with there have been 5 different Ministers for Police Fire and Emergency Services and 2 Elections in the last 4 years, which has made it very difficult to consistently identify the correct Government Personnel to engage with.

Last year NQMA delegates Claire Mackney and Vicky Lake attended 2 meetings in Brisbane with QFES Deputy Commissioner and Chief Strategy Officer- Mr. Doug Smith. Mr. Smith discussed the proposed draft amendments submitted by NQMA in detail and reassured NQMA that QFES were committed to determining options to progress for a resolution. Following the Election Mr. Smith informed NQMA that the new Minister for Fire and Emergency, Craig Crawford MP had been briefed on the EML controversy. We were also notified “any option to address the NQMA concerns would be likely to require regulatory amendment. That process includes an extensive community consultation process, in which NQMA would be a key stakeholder”.

Ms. Gen Wilcox- Executive Director- Strategy, Systems, Standards and Performance Directorate (QFES), has been delegated to specifically liaison with NQMA. The first assurance from Ms. Wilcox was that communication between herself (the QFES department) and NQMA would be as extensive as required by NQMA.

Ms. Wilcox has been in contact with both DNRM and DES (formally DEHP) to discuss feasible options. When the latest update was requested for the Miner’s Right segment, Ms. Wilcox stated, “QFES is in consultation with the Department of Environment and Science (DES), discussing mining report information. Captured in this discussion is the potential for DES to share a spatial information module with QFES to assist in differentiating between various mining tenures”. It has been this issue of being able to differentiate between the different levels of mining activity within the Government system’s that can clearly determine an Emergency Management Levy (fee) that can be equitably applied to mining tenure.

Ms. Gen Wilcox has confirmed that she will be attending the 14th May NQMA Committee and General meeting at the Mareeba Leagues club. If you have any queries or concerns regarding the EML fee you are urged to attend the General meeting. Alternatively, you can forward an email with your queries or concerns to NQMA Committee Members, who will then table your email at the General Meeting.

By,
Vicky Lake

Environmental regulation of the resources and waste industries – Audit Report

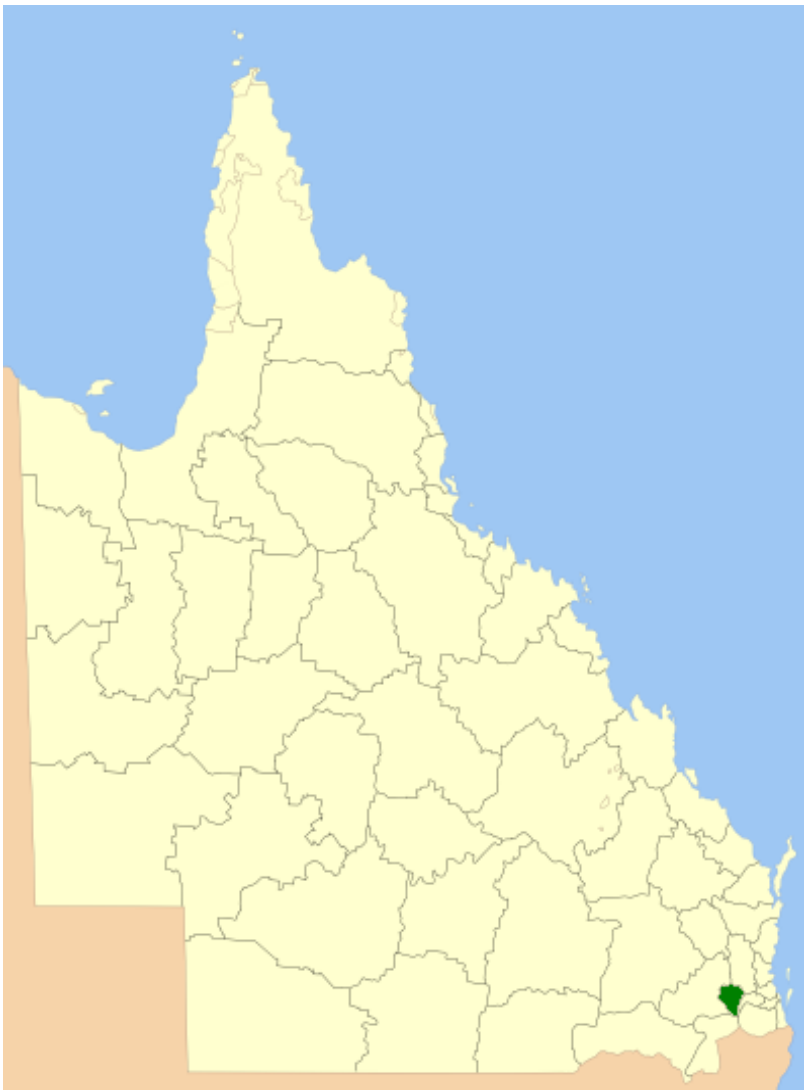
Fast Facts that came out of the Follow-up of Report 15: 2013–14 Environmental regulation of the resources and waste industries (Report 1: 2017-18)

Total annual fees have increased around 250% in the past 7 years i.e. \$18m in 2010-11 to \$45m in 2015-16.

To give some perspective, the 220,000ha (2,200 sq km) of disturbed land in Queensland (p1 & 2) is about 0.13% the total state area of 1,727,000 sq km. This is about the same size as the 2,273 sq km Lockyer Valley LGA, shown in green in the map below.

Most of the changes we are seeing implemented with the Department of Environment and Science and Department of Natural Resources, Mines and Energy.

The full report can be found [here](#).



KEY FACTS



220 000 hectares of disturbed land in Queensland



\$8.7 billion estimated rehabilitation costs



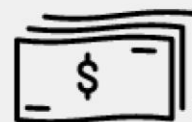
The state currently holds \$6.8 billion in financial assurance



Nine per cent of disturbed land has been rehabilitated



By 2021 disturbed land will be approximately 12 times greater than areas under rehabilitation

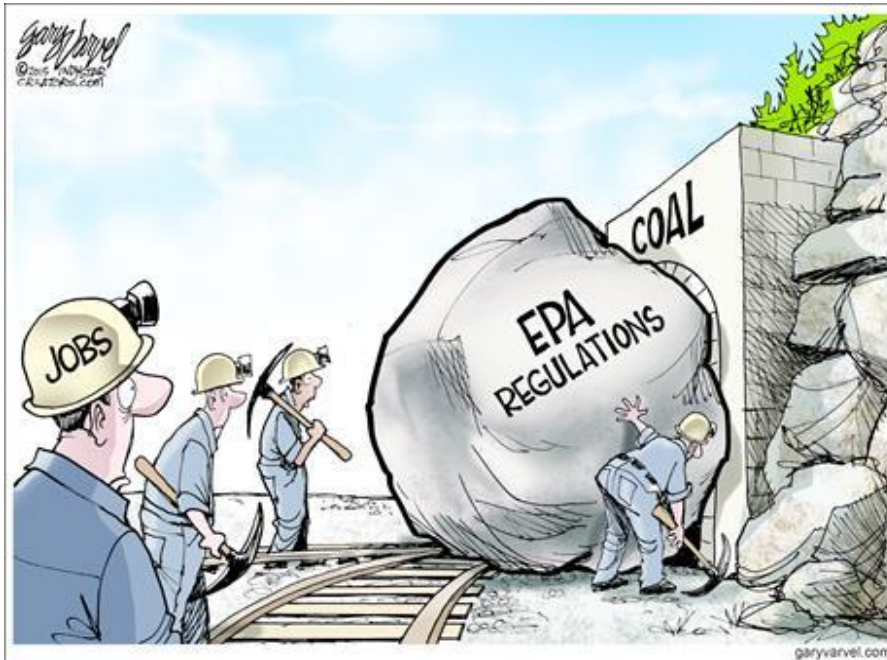


\$2.2 billion contribution to Queensland economy in royalties



60 000 people directly employed by Queensland resource industry

Note: Land is disturbed if it has been the subject of human activity that has changed the land's surface.



NQMA Membership

Members will have received the 2017/2018 membership invoices via mail or email in July 2017. If you did not receive your invoice, please contact Claire to ensure your details are up to date.

Unpaid memberships will be forwarded to the committee at the May meeting for recommendation for cancellation. If you have not paid your 2017/2018 membership, please contact Claire to discuss your circumstances. Your continued support is appreciated as we continue to represent miners to secure the future of mining in Queensland.

Behind The Crime presents... **The Gold Prospector who vanished.**

This is your chance to hear from our lead CIB Detective, Forensic Officer and Principal Crown Prosecutor who successfully prosecuted Cape York graziers, Dianne Wilson-Struber and Stephen Struber for the murder of Bruce Schuler, on their vast Palmerville Station in 2012. This Behind the Crime presentation of The Gold Prospector who vanished, is the second of it's kind to be hosted in Cairns. Invitations are open to all and bookings are essential.

When: 6pm for 6.30pm start to 8.30pm on Thursday, 14 June 2018

Where: The Crowther Theatre, JCU Cairns Campus, 14-88 McGregor Road, Smithfield

Cost: \$20 per Adult and \$15 per JCU Alumni, current staff and students

Catering: Nibbles and refreshments will be served

Registration: Please register online at <http://events.jcu.edu.au/AlumCns>

Contact: Police Chaplain Doug Foster | T: 0407 761 950 | E: Foster.DougN@police.qld.gov.au

More information and online flyer can be found [here](#).



LAMBERT & CELL'S PTY. LTD.
REFINERS - SMELTERS

LAMBERT & CELL'S Refiners Smelters & Gold Buyers specialise in offering transparent, verifiable and accurate refining for precious metals all across Australia. We deliver exemplary quality in our work and deliver service that meets the demands of our clients and exceeds their expectations every day at a competitive price.

For more details, call Michele Mobbs on: 07 4093 0052.





Time to find a new insurance broker?

Would you like them to have local experience?
Would you like them to be there for you when you need them?
Would you like them to support your local community?

Then you need to call us, JVIB...local brokers with over 20 years experience and a history of caring for our communities.



Cairns: (07) 4040 4444 Atherton: (07) 4091 6011 Mareeba: (07) 4092 4188
ABN: 91 074 970 540 AFSL: 240035 www.jvib.com.au



Australian Mining
and Exploration
Title Services

Specialists in tenement management
and administration Australia wide.

Shop 3, 165 Byrnes Street, Mareeba QLD 4880

07 4092 6431
www.amets.com.au

Please note that the NQMA has recently changed its mailing address to:

**PO box 1548
Mareeba Qld 4880**

Please ensure that all future mail is forwarded to this address.

DNRM Security Policy

Advice has come through from DNRME that have implemented a security policy. This is separate to the financial assurance required to be held against the environmental authority.

The first thing you need to know is that the *Mineral Resources Act 1989* (MRA) provides that the department can impose an amount to be held against your mining tenure.

The second thing to know is that the security requests will be rolled out over time. For holders of granted tenure, a security will be requested at time of lodgement of a dealing or renewal application. As I understand it, new applications will receive a request prior to grant of tenure.

The security will be held to ensure that the holder complies with the conditions under the MRA, rectifies any actual damage that may be caused by any person whilst acting under the resource authority to pre-existing improvement, pays amounts payable.

Indicative minimum security amounts are as follows:

- \$500** for an exploration permit for mineral or coal;
- \$2,500** for a mineral development licence for mineral or coal;
- \$1,000** for a mining lease for alluvial, colluvial and alluvial gold or tin;
- \$1,000** for a mining lease for corundum, gemstones and other precious stones; and
- \$2,500** for a mining lease for coal or any other mineral.

The department will be reviewing individual compliance history when assessing the amount of security to be held.

For further questions in relation to the security policy please refer to the policy document (found [here](#)) or contact the Mineral Hub directly on (07) 4447 9230.

The golden days of Australian mining

(Published in the Australian Mining magazine 9 April 2018)

Professors Erik Eklund and Susan Lawrence teach Australian Mining about the importance of the first Australian gold rush in shaping modern Australia, and its comparison to modern mining.

The Australian gold rush has never been as mythologised as its American counterpart, perhaps less buoyed by the lionisation of Hollywood's golden age. From Chaplin's *The Gold Rush*, through to the Paddy Chayefsky-scripted *Paint Your Wagon*, it's a well-shod story.

But, according to Professor Erik Eklund, professor of history at Federation University and author of several books related to Australia's mining history, the two events can be interconnected. He cites the Californian gold rushes starting in 1848 as a key catalyst for the birth of Australia's gold fever.

"By the 1840s there were more free migrants [to Australia], and the prospect of a gold rush to assist colonial development was quite appealing to authorities," he explained. "In some ways, the authorities had no choice but to open settlement to gold diggers.

"News of the presence of gold had been circulating since at least the 1820s, and there may have been unofficial gold rushes if the authorities had not attempted some form of control through taxation and new mining laws."

Many white settlers from Australia who had moved to California in search of gold eventually moved back to Australia. There, they returned to find not just similarities to the countryside and topology found in California, but in some instances, an expectation of even larger hauls.

The example set by the chaotic gold expanse in the wild west of California was also a useful precedent for Australian authorities when dealing with the subsequent rushes in New South Wales and Victoria, drawing on this earlier experience to help navigate the early days of this strange, new prospecting boom at the far end of the Earth.

The context of immigration entirely changed with the wake of Australia's gold rush as well, seeing a decisive end to the perception of the country as an extended penal colony.

It was this change in attitude to immigration that resulted in a more positive and opportunistic image of Australia. In the decade between 1851 and 1861, the number of white settlers in Victoria alone increased from around 77,000 people to 540,000 people.

"The news of gold meant that Australian colonial governments could stop subsidising or sponsoring migrants to come to Australia; the demand was so overwhelming," explained Eklund.

"The population of Victoria exploded," said Professor Susan Lawrence, head of archaeology and history at LaTrobe University in Melbourne (and expert on the Victorian gold rush). "The new arrivals were young, literate, and multicultural, with tens of thousands of Chinese joining migrants from France, Germany, Poland, Italy, Switzerland, the Pacific, and North America in addition to British migrants.

"Women came as well as men, leading to a pronounced baby boom by the 1860s. Convict transportation ended because being sent to Australia was no longer a deterrent."

The gold rush helped to foster communities, leading to significant regional development in Victoria and NSW from the 1850s, Queensland from the 1860s, and Western Australia from the 1880s.

"Ballarat, Bendigo, Charters Towers, Tennant Creek, Kalgoorlie and Coolgardie – in all of these towns gold was the trigger for development," Eklund added.

The golden days of Australian mining cont...

In his 2012 book *Mining Towns: making a living, making a life*, Eklund focused on the importance of six major mining towns in the national hierarchy, arguing that the study of Australian history in the 20th century has a tendency to focus on capital cities and suburbs at the expense of mining and regional development.

One area of mining history from the 19th century that does get overlooked, in Eklund's opinion, as well as the opinion of his Federation colleague Dr Fred Cahir, associate professor of Aboriginal Studies, is the important role of Aboriginal people in the time of the gold rush.

Cahir believes that in this inceptional period of great societal change, the Aboriginal people's importance to mining expansion is often neglected in historical studies.

He cites the famed 'Kerr's Nugget' as an example of this oversight in his book *Black Gold: Aboriginal People on the Goldfields of Victoria, 1850–1870*, stating that the discovery's incorrect attribution to non-Indigenes, such as the famous 106-pound nugget of gold found by Aboriginal people near the Turon, illustrates how Aboriginal people have been excised from Australian gold history.

"Generally, most writers restrict their 'Indigenous participation' lenses to the latter part of the twentieth century and almost exclusively to the northern or arid gold-producing regions of Australia," he explained in the book's opening.

"The importance of Aboriginal people's participation on the goldfields cannot be overstated. Not only has the traditional story of gold (characterised by a mistaken assumption that the 'Aborigines were swept aside') been shown to be untrue, there is now clear evidence that Aboriginal people were conscious actors and active participants in Australia's economic history, rather than passive spectators, or pawns in another culture's game."

"With British colonisation, a new group of people who valued gold as a commodity arrived," she explained. "Under British law all minerals were the property of the Crown so there was no incentive to exploit it and the authorities feared the social upheaval that a rush would bring.

"The discoveries in California were the catalyst that made people realise that they could challenge the legal status quo and benefit from the gold themselves."

Eklund agrees that Aboriginal workers were "often quite important" to the initial Australian gold rushes; the history of active participation among Aboriginal communities.

Lawrence said that Aboriginal people were aware of the existence of gold in Australia for thousands of years.

in the growth of the Australian mining industry can be seen today, he said, in the current day reality of gold mines located in rural and remote Australia, which often see Aboriginal groups holding Native Title rights over mining lease areas.

And speaking of current day reality, talk turns to the notion of the 'new gold rush' espoused by modern Aussie media, particularly surrounding prominent recent discoveries in the Pilbara and Eastern Goldfields region of WA.

Eklund believes it is a nice label that doesn't stand up to close historical scrutiny, although there is one point of synergy between the 1850s and today that he says does bear particular interest: the role of China.

"Chinese miners, mostly from Southern China, were important components of the goldfields workforce," he explained. "By 1861 there were around 24,000 Chinese in Victoria alone, and there was also Chinese investment coming to Australia. That is similar of course to today's situation where Chinese investment houses are key players in Australian-listed gold miners, and China is the world's largest producer of, and market for, gold."

NATIVE TITLE INFORMATION

NQMA Native Title Officer and representative for Native Title matters
NQMA contact: Paul.E.Crossland- (07) 4095 3324 Email- pc403@bigpond.com

Members seeking assistance with their native title matters, can contact Paul Crossland to discuss their specific requirements.

Small Scale Mining Indigenous Land Use Agreement notice

- Western Yalanji People SSM ILUA expiry date is 23 April 2019.
- Ewamian People SSM ILUA expiry date is 23 April 2019.
- Djungan People SSM ILUA expiry date is 18 December 2020.

Key Contacts for Native Title Matters:

Native Title Unit - DNRM

Department of Natural Resources and Mines:

Exploration

Address: Level 9, Verde Tower, Flinders Street

Postal: PO Box 1752, Townsville Qld 4810

Phone: (07) 4447 9227

Email: FLANorth@dnrm.qld.gov.au

North Queensland Land Council

FAME Unit

61 Anderson Street, CAIRNS QLD 4870

Phone: (07) 4042 7000

Fax: (07) 4042 7070

Email: reception@nqlc.com.au

Ewamian People:

Ewamian Aboriginal Corporation

9A Hort Street Mareeba Qld 4870

Phone: (07) 4092 2555

Fax: (07) 4092 2555

Email: Sharon@Ewamian.com.au

Djungan People:

Nguddaboolgan Aboriginal Corporation

C/- Post Office

Yarrabah Qld 4871

Phone: 0473 614 508 (Judulu Neal)

Email: NguddaboolganPBC@gmail.com

Western Yalanji People:

Western Yalanji Aboriginal Corporation

39B Constance Street, Mareeba, QLD 4880

Postal: PO. Box 2682 Mareeba, QLD 4880

Phone: (07) 4092 6712

Email: admin@westernyalanjicorp.com

Editors Notes:

The Miners Right is usually published every February, May, July, September and November prior to the NQMA general meetings. The MR is a great way to share information within our mining community. We are always looking for contributions to make the newsletter interesting and informative. If you would like to see something included or you can contribute stories, historical information or general mining info please contact the editor. Members can also advertise their business, items for sale or wanted items without charge. Please send requests via email to Claire.Mackney@bigpond.com or phone through on 0488 299 296.

Disclaimer: *While every effort is made to ensure that information provided in the Miners Right is correct, it should not be relied on when making decisions in relation to your business. The NQMA committee recommends that appropriate professional advice should be sought.*

FOR SALE

Please contact Graham or Lyn Byrne on 07 4091 4905 in relation to the below listed items.

- MINELAB "Emdar" Conveyor Belt nugget detector. Serviced by Minelab. Includes operation manual and Air Ram for Shute - \$15,000.00 + gst
- Gardner Denver Hydratrack 3500 Hydraulic Drill Rig. 12 ft rods will drill to 5" hole
- Cat V8 motor. Air con cab. Many spares - \$35,000.00 + gst
- 60 HP 8 pole slip ring motor \$4,000.00
- 6x6 K&L Water Pump & pulley. GC - \$200.00
- 40 mm HD Truck Mounted Screen \$1,500
- Amalgam Barrel on frame \$300
- 8ft Cone Settler \$800
- Bedford Diesel bus \$1,000
- Complete Working Electric Mobile Alluvial Plant \$100,000 incl



WANTED

10 Meter light mode duty conveyor – complete

Contact Graham or Lyn as above

FOR SALE

Alluvial Mining Lease 20472
Located in the White Horse Area

10 sub block EPM 18117
Located on Mount Madden Dome
covering the Buchanan hard rock with
alluvial systems
Contact Buddy Kelly 07 40602245

GOLD MINING LEASE FOR SALE

9 ha granted alluvial mining lease near
Groganville, in the Palmer Goldfields
area. Good Access. Permanent Water.

Phone: (07) 4095 3324
Mobile: 0448 761 743

FOR SALE

Please contact Max on 0419 657 607 or 07 47752499 or 07 40602267 for enquiries on items listed below

Mobile Gravity Gold Plant

Professionally built in WA. 2 tph. Large capacity scrubber for the treatment of high clay content material. Twin fines concentrators, Tails sluice. Fines sluice. Engine plant powered by a Honda GX 200. Mounted on wheels but can be put on a trailer.



Excellent alluvial processing plant designed for either bulk sampling of deposits or full time small scale production. View new model on www.amtas.com.au (Looks similar to pictured Gold Plant) \$8,000 firm.



Professional built in WA. BSP 10 in good condition. Can do up to 30m3 per hour. Excellent test plant or production plant. Requires generator and pump. Plant situation in Townsville. \$17,000

WANTED: 6x4 or 5x4 water pump with motor. Must be in good condition and ready for work.

FOR SALE

Hopper and Plate feeder, 3.9m height at back, 3.4m height in front.
Make a reasonable offer. Phone Jay on 0456 697 533



FOR SALE

Plant for Sale

Following a compiled list of photographs of an existing plant for the recovery of Gold, Tin or Heavy metals recovery. Currently this plant is based in Sarina

Plant has undertaken a full refurbishment and is now in better than excellent condition. Ragging for jigs included.

All items have been stripped back to base metal and sand blasted then re painted with two pack paints bring the plant into better than new condition. This plant is ready for production. All portions of this plant have been sized for easy of transport. The individual parts fit upon 3 body trucks for transport. This whole plant was built professionally by the Inverell foundry formerly in NSW. The plant is able to be moved into different positions using any big machine to drag it along on heavy steel sleds for easy set up.

The plant was previously in production in NSW capturing heavy black sands plus fine gold recovery which and for final recovery the gold was recovered across a shaking table. Not included in this offer for sale.

Plant description is as follows:

Mined gravels are loaded onto a wet shaker screen to remove oversize materials. NOT supplied.

All remaining materials are then pumped via the upper 6 inch Cyclone to remove excess water, (pump Not included), then dropped onto the leed in plate across a 6 foot by 9 foot Inverell (6 hutch Jig). This concentrate then drops through the spigots into a collection hopper. This slurry is then drawn into and through a 3 inch by 2 inch Warman gravel pump. This slurry is then pumped into the 3 inch cyclone, which then drops into the leed plate for the clean up Jig. This jig is a 2 foot by 4 foot Inverell 2 hutch jig. Concentrate then drops via spigots into two concentrate tanks. This concentrate is then ready for final clean up. The cleanup can be at a later date, or the concentrate can be continuously cleaned by either a shaker table, or by Knelson concentrator. NOT supplied.

As anyone can see, this unit is made for production. Main frame fabrication is from heavy steel section. This unit is in perfect condition, final sand blasting and professional painting by the Sarina Sandblasting of the last few components is near competition. All parts will be fully reassembled when sandblasting/painting is complete. A number of additional are included such as, approx. 200m of 5" piping . Not shown.

This plant was purchased for a gold project, which is now not going ahead. As you can see from the photographs, the overall construction and operation of this plant would suit a miner who is ready for production with trouble free operation. The costing to build a plant such as this by a professional company would far exceed half a million dollars. This plant is priced to sell. Price available on application. Call 0428980079 now to secure your new plant.



Fine gold recovered.



Warman 3x2 inch Pump

More photos on page 13...



Plant in assembled state



Collection Hoppers



6 inch feed cyclone



Collection Hoppers



6 Hutch Inverell Jig with Ragging

ADVERTISING



Mining & Resource Permit Services

Dependable Tenure Management & Pegging

Contact: **Reuben Thomas & Fiona Abbey**

Phone: 07 40566516

Mobile: 0407080673

"Tenure Management, Pegging, GPS, Mapping"

Postal Address: PO Box 14202, Mount Sheridan Qld 4868

EMAIL: reuben@miningrpservices.com.au or

fiona@miningrpservices.com.au

Atherton Mower and Chainsaw Services

55 Tolga Rd, Atherton 4883

Ph: (07) 40 917 499

Fax: (07) 40 917 448

sales@athertonmowers.com.au

www.athertonmowers.com.au



Locally Owned and Operated

FOR ALL YOUR FUEL

AND OIL NEEDS

SERVICING FAR NORTH QUEENSLAND

Ph: (07) 4098 8222

**Kim Hillier
Geologist**

Located in Mareeba.

Extensive experience in the Palmer, Hodgkinson and Georgetown areas with both hard rock and alluvial operations. Tenement administration, ML and EPM valuations, exploration surface work and drilling programs. Ph: 0428 250 364

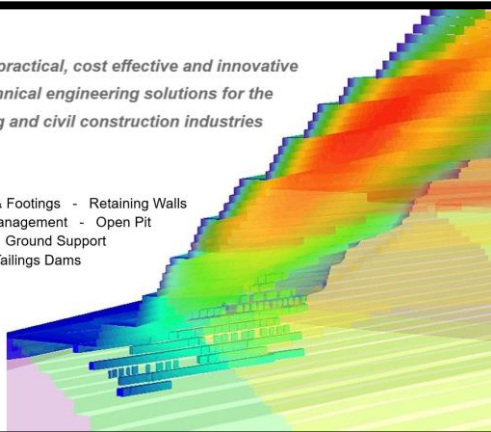


Providing practical, cost effective and innovative
geotechnical engineering solutions for the
mining and civil construction industries

Site Investigations - Foundations & Footings - Retaining Walls
Slope Stability - Rock Fall Management - Open Pit
Underground Mining - Ground Support
Waste Dumps and Tailings Dams

The only geotechnical and rock
engineers in the Far North who
specialize in your mining needs!

W: www.geckogeotech.com
E: info@geckogeotech.com
M: 0497 377 228



TURBOPAN
DELIVERING BETTER GOLD PANNING

Turbopan™ gold pan is a tool for the prospector and artisan mining involved in small scale mining. Whether you're a hobbyist out looking for a run or crevice filled with gold or gold panning for a living in a developing country, Turbopan is the right piece of prospecting equipment to get the gold quickly and easily.

Kim Hillier – 0428 250 364

WANTED TO BUY

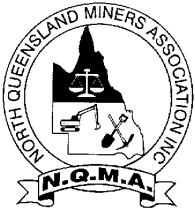
TIN CONCENTRATES

FOR MORE INFORMATION

PLEASE CONTACT

MICHELE ON 4093 0052 OR

GRAHAM ON 0438 726 854



NORTH QUEENSLAND MINERS' ASSOCIATION INC.

ABN 76 525 585 093

APPLICATION FOR MEMBERSHIP

I/We.....
the undersigned, being an eligible person, partnership, or company, hereby apply for Membership of the North Queensland Miners' Association Inc. (See eligibility clause below)

BUSINESS NAME.....

POSTAL ADDRESS.....
.....POSTCODE.....

CONTACT PERSON.....

Phone No during day:.....Fax No:.....

E-mail address if available.....

NUMBER and LOCATION of MINING TENEMENT/S held or ASSOCIATION WITH MINING INDUSTRY.....
.....

I/We hereby agree to comply with the Rules and Regulations as prescribed in the Constitution of the North Queensland Miner's Association Inc.

- Full Membership.** Enclosed herewith is Annual Membership Fee of **\$100.00**.
Eligibility for Membership: *'Any person, partnership or company who: is actively involved in mining or prospecting; holds or has an application for any mining tenure allowable under the Queensland Mineral Resources Act 1989 or any Act that replaces it; has a tenement before the Land and Resources Tribunal; or has a direct professional interest in the mining industry.'*
- Corporate Membership.** Enclosed herewith is Annual Membership Fee of **\$250.00**.
Eligibility for Membership: *'Any company which: is actively involved in mining or prospecting; holds or has an application for any mining tenure allowable under the Queensland Mineral Resources Act 1989 or any Act that replaces it; has a tenement before the Land and Resources Tribunal; or has a direct professional interest in the mining industry.'*
- Associate Membership.** Enclosed herewith is Annual Membership Fee of **\$40.00**.
Eligibility for Associate Membership: *'Any person or partnership who has interests in fossicking for gold, gems and metals; or any company or individual providing goods or services to the mining industry but not directly involved in mining'.*

SIGNED

DATE/...../.....

Please send Application Form to:

NQMA Treasurer: Claire Mackney, PO box 1548, Mareeba Qld 4880
email: Claire.Mackney@bigpond.com

North Queensland Miners' Association presents the Annual Gold Panning Championships 2018

When:

Saturday 11th August
from 9 am

(Register from 8 am)

Where:

Heritage Centre

Mareeba

(Next to the markets)



All age groups catered for.

From under 12's to over 60's



A great way
to interest the
kids in fossicking for GOLD!

Free entry to the photo competition. Photos must be related to the mining industry. Bring your photo to the event by 10 am.

1st Prize \$80

2nd \$60

3rd \$40

Schedule of Events

09.00am Specialty Panning *
09.30am Under 12
10.00 am Juniors 12 - 16
10.30 am Novice Women
11.00 am Novice Men
12 noon Skilled Women
12.30 pm Skilled Men
01.00 pm Mayor presents Trophy
Photo Competition Winner
01.30 pm Veterans over 60 years
02.00 pm Open
02.30 pm Teams Challenge

Other Things to Do

Stalls on Mining/Fossicking

Fun Panning Bay :

For just \$5 buy a parcel of sand and learn how to pan.

NQMA representative will show you how!

Guaranteed to find gold.

Ideal for the kids.

Major Prizes including a Gold Monster 1000 Metal Detector Courtesy Leading Edge Electronics Mareeba and Minelab. Check out their display at the Gold Panning. Supplying an extensive range of detectors and prospecting equipment.

Amazing Jewellery Raffles to be won.

(Superb Quality Jewellery Designed by Atherton Tableland Craftsman)

1st : Rare Crystal Gold Nugget Pendant Value \$1,600

2nd: Gold Nugget Pendant Value \$1,450

3rd: Pair Dropper Earrings Value \$1,100

Drawn Saturday 11th August 2018



Trophies and excellent prizes to be won in all events

Keep hunger at bay by checking out the Sausage Sizzle

Come along for a great day out and support the north Queensland mining industry.

For more information contact Lyn Ph (07) 40914905
email: glbyrne351@bigpond.com