

# THE MINER'S RIGHT

The North Queensland Miner's Association Incorporated  
Representing Miners, Prospectors and Associated Industries  
September 2017

## **PRESIDENT:**

Fiona Abbey  
Ph: 07 40566516

## **VICE-PRESIDENT:**

James Said  
Ph: 0427 569 848

## **SECRETARY:**

Vicky Lake  
Ph: 0405 112 154  
Or 07 4060 2267

## **TREASURER:**

Claire Mackney  
Ph: 0488 299 296

## **NATIVE TITLE OFFICER:**

Paul Crossland  
Ph: 40953324

## **EDITOR:**

Fiona Abbey

## **WEBSITE:**

[www.nqma.com.au](http://www.nqma.com.au)

[www.facebook.com  
/NorthQueensland  
MinersAssociation](https://www.facebook.com/NorthQueenslandMinersAssociation)

## **Next Meetings:**

Monday  
11<sup>th</sup> Sept 2017  
Mareeba Leagues  
Club 1:00pm

## **Presidents Report – Fiona Abbey**

Wow how quick has the past 12 months flown past. The 2017 AGM is coming up on Monday 11<sup>th</sup> September and it's time once again to vote for your committee for the next 12 months. I can say that I am very grateful to have such a dedicated committee, as the subjects that we cover are very time consuming and it couldn't be done without committee members taking time out of their busy lives to contribute over a wide range of topics that include, fire and emergency levy, local council rates, changes to legislation, landowner issues, native title matters and environmental matters. All of these are ongoing and take many hours of volunteer time to read, understand, reply and fight for the rights of miners. The months in between meetings the Executive Committee are in constant contact with each other sorting through the never-ending changes and challenges.

The Gold Panning Championships are done and dusted for another year and it was great to see many new and old faces in the crowd. The day was a great success and once again we couldn't do without our volunteers and Vicky's Jokes to get us through the day! Full results further along....

I had the privilege of attending Mr Donald Walker's 90<sup>th</sup> Birthday Party held in Atherton on Friday 4<sup>th</sup> August. It was such a great Celebration of Don's life and was great to hear the stories from his younger years and of his fast cars zooming around Herberton. What got me the most was that I was in a room full of people that support mining and heard how mining supported them. They were pioneers and entrepreneurs bringing jobs to towns and stability for families for many decades. A lot of very hard workers sat around that table sharing their stories. Ms Felicity Jack has been very busy writing a book for family and friends of Don and this much anticipated book will be ready later in the year. Watch this space for details of a book launch!

I also met with a very special lady Mrs June Fisher at Don's luncheon. Mrs Fisher was the first secretary of the Tin Producers Association (that evolved into the NQMA) and she shared a quick couple of stories of their fight with the Nation's Capital on the tin allocations back in the day. June had to fund her own flights and accommodation and take on the Politicians. I have asked June to put the stories in writing so we have a capture of some of our very important history and she will be our special guest at the 2017 AGM.

The fight continues and will continue for the next generation as well. As long as we have Miners and families to support NQMA will continue our battles with the Government Bodies to bring fairness to the Mining Industry.

## Mareeba Shire Council Rates

On 2<sup>nd</sup> August 2017 the Mareeba Shire Council sent a letter to all rateable mines, advising of the changes to occur in the next Rates Notice, from a budget that was adopted on 21<sup>st</sup> June 2017. Within two weeks of this letter the Rates Notices were in the mail box. The following categories now apply for any Mining Leases/Claims within Mareeba Shire:

<b>Category:</b>	<b>Description:</b>	<b>Differential General Rate:</b>	<b>Minimum General Rate:</b>
E1 – Mining Lease/Claims	All land where mining leases and claims are used for prospecting or the development of a mine as defined in the Mineral Resources Act 1989, or where extractive industries are being conducted and the extraction of material does not exceed 200 cubic metres per annum and where no operators or employees reside on the property	0.06721	\$467.00
E2 – Mining Lease/Claims	All land where mining leases and claims are used for prospecting or the development of a mine as defined in the Mineral Resources Act 1989, or where extractive industries are being conducted and the extraction of material does not exceed 200 cubic metres per annum and where one or more of the operators or employees reside on the property	0.08761	\$1000.00

Pretty good mark up for no additional services. NQMA would encourage members to seek their own definition of reside (dictionary) and if no one is residing on the lease/claim please make sure to lodge a Statutory Declaration and have your rates reduced. Note that the default category is E2. This Stat Dec must be lodged two weeks before the rates due date.

If reading the "Important rates and charges information 2017/2018" and compare against the previous year, you will see some significant decrease in the Extractive Industries (Quarries) from \$743.00 minimum and \$20,883.00 maximum (2016/2017) to \$500.00 minimum and \$600.00 maximum (2017/2018).

It is also noted there are two other categories for Mining in 2017/2018:

- E3 – Mining Lease/Claims extraction of material exceed 200 cubic metres and employs between 11-50 employees – Minimum General Rate \$25,000.00
- E4 – Mining Lease/Claims extraction of material exceed 200 cubic metres and employs over 50 employees – Minimum General Rate \$50,000.00

This topic will be discussed at the next NQMA meeting.

## **Legislative Changes**

### **Mineral, Water and Other Legislation Amendment Bill 2017**

On Tuesday 22 August 2017, Hon AJ Lynham, Minister for State Development and Minister for Natural Resources and Mines, presented a bill that amends a number of resources acts including the *Mineral Resources Act 1989* and *Mineral Resources Regulation 2013*.

Hon Lynham states: *"The proposed amendments will improve the statutory processes that landholders and resource authority holders may use to resolve disputes that arise in the negotiations of these agreements. At the same time, it will preserve the pathway for the parties to seek a binding independent determination where agreement cannot be reached. The amendments:*

- *remove department run conferences as an alternative dispute resolution option for the statutory negotiation process;*
- *provide that the Land Court or a prescribed alternative dispute resolution institute can determine the type of alternative dispute resolution and the alternative dispute resolution practitioner where the parties cannot agree;*
- *require the resource authority holder to pay the costs of the alternative dispute resolution practitioner, regardless of who issues the alternative dispute resolution election notice;*
- *establish arbitration as an alternative to going to the Land Court if a CCA or make-good agreement has not been agreed;*
- *ensure a resource authority holder remains liable to compensate a landholder for their professional fees, even in the circumstance where negotiations do not result in an agreement;*
- *expand reasonable and necessary professional fees to include the cost of an agronomist to assist in evaluating the impact of the proposed activities on the landholder's land; and*
- *expand the Land Court's jurisdiction to include the power to determine the appropriate level of professional fees.*

*These changes have been broadly supported by our stakeholders."*

The NQMA has opposed these changes both via a skype meeting with DNRM at the July 2017 meeting and again in writing to DNRM. The Changes are NOT supported by the stakeholder of NQMA.

These changes add extra pressure to the Mining Industry, whereby the Miner will be paying for all "reasonable" legal costs for any landowner that opposes exploration on their property. A major fact the Queensland Government seems to overlook time and again – is the MINERALS ARE OWED BY THE STATE. Miners have a right to enter the property and explore for minerals. Submission are called for by 15<sup>th</sup> September, however the first round of submissions had NO effect on this process and the Government has lodged the BILL without taking in to consideration any concerns from NQMA.

I would urge you to read this BILL and speak to your local member about your concerns for future exploration in Queensland. The Bill can be found at [https://www.legislation.qld.gov.au/Bill/Pages/Bill\\_55\\_17.htm](https://www.legislation.qld.gov.au/Bill/Pages/Bill_55_17.htm) scroll down to Mineral, Water and Other. The little "page" icon is the explanatory notes and easier to read/explain the proposed legislation.

If you are having any issues locating the information email [fiona@miningrpservices.com.au](mailto:fiona@miningrpservices.com.au) and I will send you the link.

## SPRINGVALE DECISION

On 14 August 2017, the Queensland Government, through Department of Natural Resources and Mines (DNRM), made the decision to reject mining lease applications located on Springvale Station in Far North Queensland. The Minister stated that he had formed a view that it was not in the public interest for the applications to be granted. Once again the green vote has won the day and the current Queensland Government has bowed down to scaremongering and political powers of persuasion. In the Ministers own correspondence, it was stated that a research report commissioned on alluvial mining in reef catchments, found that based on information available on the scale of current operations, alluvial mining is **unlikely** to make a significant contribution to overall anthropogenic sediment loads entering the Great Barrier Reef. It seems the Minister also considered that due to the operations only employing two to three people and coming in under the threshold for royalty payments, the economic benefit to the state didn't outweigh the unlikelihood of sediment running into the Reef. So much for the Government supporting small/family run operations in North Qld.

Bring on the Qld Elections and here's to a majority government not scared to support the Mining Industry, whatever size we may be!

**A little birdie... has said that one of our very own members is on the TV show "This Time Next Year" on Monday night 11<sup>th</sup> September...so tune in..**

### NQMA Membership

Members would have received the 2017/2018 membership invoices via mail or email by now. Members are reminded that membership fees will need to be paid prior to the AGM in order for your vote to be valid. Your continued support is appreciated as we continue to represent miners to ensure future of mining in Queensland.



**LAMBERT & CELL'S PTY. LTD.**  
REFINERS - SMELTERS

**LAMBERT & CELL'S Refiners Smelters & Gold Buyers** specialise in offering transparent, verifiable and accurate refining for precious metals all across Australia. We deliver exemplary quality in our work and deliver service that meets the demands of our clients and exceeds their expectations every day at a competitive price.

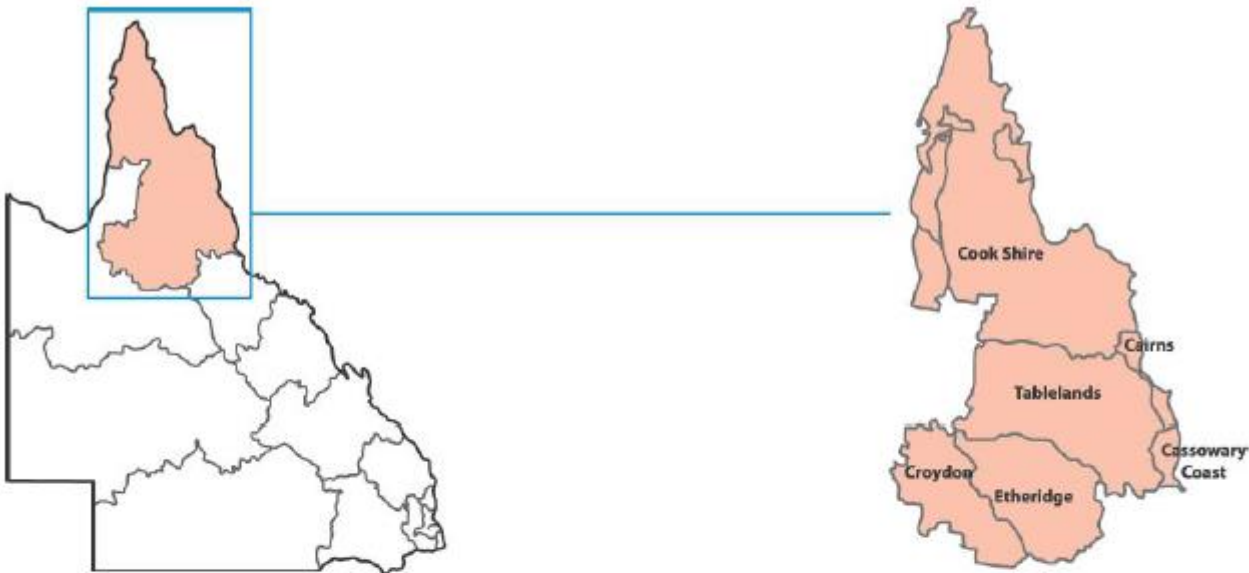
For more details, call Michele Mobbs on: 07- 4093 0052.



The following was taken from the Economic Contribution of the Mineral and Energy Sector to the Queensland Economy 2015/16 prepared by Lawrence Consulting for the Queensland Resources Council 2016



Far North



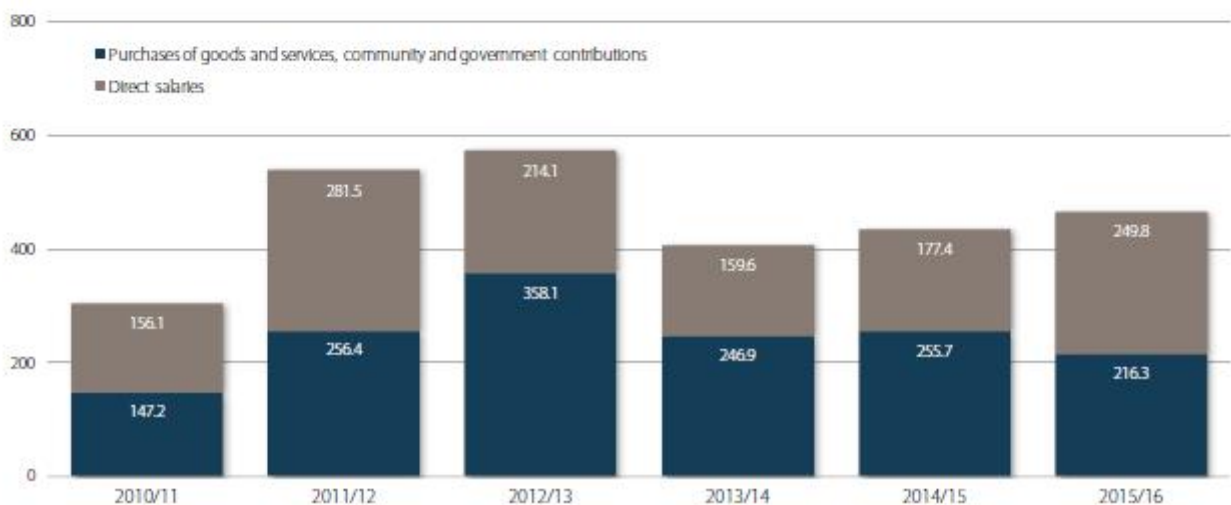
Direct contribution

In 2015/16, the minerals and energy sector in this region contributed:

- \$249.8 million in wages and salaries to 1,882 direct fulltime employees, with an average salary of \$132,726; and
- \$216.3 million in purchases of goods and services from local businesses (including contractors), community contributions and local government payments.

Direct Expenditure of Resources Sector

Far North (\$ million)





# GOLD PANNING CHAMPIONSHIPS RESULTS 2017

Another year another successful Gold Panning Comp

The Grinning Winners are...

## SPECIALITY PANNING

- 1<sup>ST</sup> Scott McKowen
- 2<sup>ND</sup> Tess Willes
- 3<sup>RD</sup> Max Fisher

## JUNIORS UNDER 12 YEARS

- 1<sup>ST</sup> Dallas Brown
- 2<sup>ND</sup> Zac Painter
- 3<sup>RD</sup> Tyisha Anchor

## JUNIORS 12 – 16 YEARS

- 1<sup>ST</sup> Toby Ryan
- 2<sup>ND</sup> Blake Bull
- 3<sup>RD</sup> Jordan Stocker & William Milher

## NOVICE WOMEN

- 1<sup>ST</sup> Sue Shearer
- 2<sup>ND</sup> Sandra Stocker
- 3<sup>RD</sup> Michelle Ryan

## NOVICE MEN

- 1<sup>ST</sup> Rocky Pinch
- 2<sup>ND</sup> Vince Macri
- 3<sup>RD</sup> Steve Eggerstedt

## SKILLED WOMEN

- 1<sup>ST</sup> Kathy Billing
- 2<sup>ND</sup> Tess Willes
- 3<sup>RD</sup> Sue Shearer

## SKILLED MEN

- 1<sup>ST</sup> Jay Santacatterina
- 2<sup>ND</sup> Max Fisher
- 3<sup>RD</sup> Vince Macri

## VETERANS OVER 60 YEARS

- 1<sup>ST</sup> Vince Macri
- 2<sup>ND</sup> Ray Wallace
- 3<sup>RD</sup> Tess Willes

## OPEN

- 1<sup>ST</sup> Ken Wilson
- 2<sup>ND</sup> Scott McKowen
- 3<sup>RD</sup> Ray Wallace

## TEAMS

- 1<sup>ST</sup> Dreamers
- 2<sup>ND</sup> Old Farts
- 3<sup>RD</sup> Up One

## GOLD RUSH

- 1<sup>ST</sup> Kevin Willes
  - 2<sup>ND</sup> Jessie Foster
  - 3<sup>RD</sup> Jordan Stocker
- Lucky Number Lizzy Joyce

## JEWELLERY RAFFLE

- 1<sup>ST</sup> Paula Martin
- 2<sup>ND</sup> Jodi Negri
- 3<sup>RD</sup> Cynthia Barnwell

## PHOTO COMPETITION

- 1<sup>ST</sup> Sandra Stocker
- 2<sup>ND</sup> Michael Staneke
- 3<sup>RD</sup> Vicky Lake



All Skill – Mr Jay Santacatterina

# NATIVE TITLE INFORMATION

NQMA Native Title Officer and representative for Native Title matters  
NQMA contact: Paul.E.Crossland- (07) 4095 3324 Email- [pc403@bigpond.com](mailto:pc403@bigpond.com)

Members seeking assistance with their native title matters, can contact Paul Crossland to discuss their specific requirements.

## Key Contacts for Native Title Matters:

### Native Title Unit - DNRM

#### Department of Natural Resources and Mines:

Field and Land Access North Region

Address: Level 9, Verde Tower, Flinders Street

Postal: PO Box 1752, Townsville Qld 4810

Phone: 07 44479227

Email: [FLANorth@dnrm.qld.gov.au](mailto:FLANorth@dnrm.qld.gov.au)

### North Queensland Land Council

FAME Unit

61 Anderson Street, CAIRNS QLD 4870

Phone: (07) 4042 7000

Fax: (07) 4042 7070

Email: [reception@nqlc.com.au](mailto:reception@nqlc.com.au)

### Ewamian People:

Ewamian Aboriginal Corporation

9A Hort Street Mareeba Qld 4870

Phone: (07) 4092 2555

Fax: (07) 4092 2555

Email: [Sharon@Ewamian.com.au](mailto:Sharon@Ewamian.com.au)

### Djungan People:

Nguddaboolgan Aboriginal Corporation

C/- Post Office

Yarrabah Qld 4871

Phone: 0473 614 508 (Judulu Neal)

Email: [NguddaboolganPBC@gmail.com](mailto:NguddaboolganPBC@gmail.com)

### Western Yalanji People:

Western Yalanji Aboriginal Corporation

39B Constance Street, Mareeba, QLD 4880

Postal: PO. Box 2682 Mareeba, QLD 4880

Phone: (07) 4092 6712

Email: [admin@westernyalanjicorp.com](mailto:admin@westernyalanjicorp.com)

## Environmental Compliance Matters

Do you know that Environmental Authorities are now available online through Queensland Government: <https://environment.ehp.qld.gov.au/env-authorities/>

Environmental Reports online – there are also a number of reports available online that can be searched over Lot on Plans or tenure number. These reports include “matters of State environmental significance”, “Regional ecosystems” and “Terrestrial biodiversity and aquatic conservation values” – All available at <https://environment.ehp.qld.gov.au/report-request/environment/>

**PLEASE NOTE!! – your ANNUAL ENVIRONMENTAL AUTHORITY FEE Invoice includes a USER FEE of \$45.64. This is a FEE for using the CONNECT system only. If you do not pay through CONNECT then you do NOT have to pay the USER FEE. If you have paid this fee please contact EHP for a refund. EHP are NOT automatically giving refunds if you pay this by mistake. They just very quietly keep the money!!**



## Let JVIB take the stress out of insurance

At JVIB we work tirelessly to ensure that we find the right policy to suit your individual needs, and keep you away from all the back office frustration.  
Call your local JVIB office today.

**Insurance:** Business & Commercial • Tourism & Hospitality  
Marine • Heavy Motor Fleet • Motor Vehicle • Personal



**JOE VELLA**  
INSURANCE BROKERS



**Steadfast**  
STRENGTH WHEN YOU NEED IT

Cairns: Level 1, 108 Mulgrave Rd • Mareeba: 113 Byrnes St • Atherton: Unit 1/1-3 Mabel St  
Phone: (07) 4040 4444 • Email: [jvib@jvib.com.au](mailto:jvib@jvib.com.au) • Website: [www.jvib.com.au](http://www.jvib.com.au)

### DNRM FEES – as of 1<sup>st</sup> September 2017 (for full list see Mineral Resource Regulations)

Type	Amount	Type	Amount
<b>Rent</b> – Exploration Permit (Mineral) per sub block	\$155.80	<b>Rent</b> – Mining Lease per Hectare	\$60.20
Application for Exploration Permit (Minerals)	\$945.00	Application for Mineral Development Licence	\$2530.00
Renewal for Exploration Permit (Minerals)	\$630.00	Renewal for Mineral Development Licence	\$884.00
Application for Mining Lease Alluvial Gold/Tin	\$789.00	Application for Mining Lease – any other mineral	\$1579.00
Renewal for Mining Lease Alluvial Gold/Tin	\$789.00	Renewal for Mining Lease - any other mineral	\$1579.00
Application for Transfer for Alluvial Gold/Tin	\$393.50	Application for transfer for any other mineral	\$615.00

**AMETS**

Australian Mining  
and Exploration  
Title Services

Specialists in tenement management  
and administration Australia wide.

Shop 3, 165 Byrnes Street, Mareeba QLD 4880

07 4092 6431  
[www.amets.com.au](http://www.amets.com.au)

**WANTED TO BUY**

**TIN CONCENTRATES**

**FOR MORE INFORMATION  
PLEASE CONTACT**

**MICHELE ON 4093 0052 OR  
GRAHAM ON 0438 726 854**



## Small Scale Mining ILUA - CPI Adjustments

Provided by the North Queensland Land Council

Annual Compensation per Tenement							
Financial Year	CPI Index	Exploration Permit	Prospecting Permit	Mineral Development Licence (up to 50ha)	Mining Lease (up to 50ha)	ML & MDL additional hectares (per ha)	Mining Claim
2017/18	110.5	*NTPC	\$ 55.31	\$ 553.05	\$ 553.05	\$ 11.06	\$ 77.43
2016/17	108.5	NTPC	\$ 54.30	\$ 543.04	\$ 543.04	\$ 10.86	\$ 76.03
2015/16	106.7	NTPC	\$ 53.40	\$ 534.03	\$ 534.03	\$ 10.68	\$ 74.76
2014/15	105.2	NTPC	\$ 52.65	\$ 526.53	\$ 526.53	\$ 10.53	\$ 73.71
2013/14	102	NTPC	\$ 51.05	\$ 510.51	\$ 510.51	\$ 10.21	\$ 71.47
2012/13	99.9	NTPC	\$ 50.00	\$ 500.00	\$ 500.00	\$ 10.00	\$ 70.00
2011/12	99.9	NTPC	\$ 50.00	\$ 500.00	\$ 500.00	\$ 10.00	\$ 70.00

Cultural Heritage Protection Activities							
Financial Year	CPI Index	1. Site Inspections		2. Mileage Allowances		3. Accommodation	4. Meals
		(a) up to 15ha	(b) Additional Hectares (per ha)	(a) ATO allowance	(b) Off Road Allowance is 15% of (2.a)	(a) Camping (per person/per day)	per person/per day
2017/18	110.5	\$ 1,659.16	\$ 88.49	\$ 0.67	\$ 0.10	\$ 11.06	\$ 55.31
2016/17	108.5	\$ 1,629.13	\$ 86.89	\$ 0.66	\$ 0.10	\$ 10.86	\$ 54.30
2015/16	106.7	\$ 1,602.10	\$ 85.45	\$ 0.66	\$ 0.10	\$ 10.68	\$ 53.40
2014/15	105.2	\$ 1,579.58	\$ 84.24	\$ 0.74	\$ 0.11	\$ 10.53	\$ 52.65
2013/14	102	\$ 1,531.53	\$ 81.68	\$ 0.74	\$ 0.11	\$ 10.21	\$ 51.05
2012/13	99.9	\$ 1,500.00	\$ 80.00	\$ 0.74	\$ 0.11	\$ 10.00	\$ 50.00
2011/12	99.9	\$ 1,500.00	\$ 80.00	\$ 0.74	\$ 0.11	\$ 10.00	\$ 50.00

### Please support our Associate Members

Aust Mining & Exploration Title Services AMETS – 07 40926431	Mining & Resource Permit Services (Reuben Thomas) – 07 40566516
Mining Tenure Management (Michele Mobbs) – 07 40930052	Anson Advisory (Business, Agri and Enviro Services – 0438 877 856
Palmer River Roadhouse – 07 40602020	Tableland Analytical (Assaying) – 07 40962185
HEH Pty Ltd (EarthMoving) – 07 40922477	Cooktown Earthmoving & Quarrying – 07 40695340
Bolwarra Enterprises (EarthMoving and Quarrying) – 07 40916 666	Drill North Pty Ltd (Drill Rigs) – 07 40951199
Boundary Mining Carbon Services – 07 40914905	Tolga Traders (Trailers & Heaters) – 07 40954296
BJ Training & Mine Services (incl Explosives Training – 0428 877 940	Tilly's Crawler Parts Pty Ltd – 1800TILLYS10
Bremar Minerals (Tin Buyer) – 0428 440 604	Kim Hillier Turbo Pans – 0428 250 364
Marano's Fuel (All Fuel & Oil Needs) 07 40988222	Nth Qld Metlabs – 07 40976110
Atherton Mower and Chainsaw Services – 07 40917499	Cairns Mineral and Lapidary Club
Queensland Small Miners Association	Atherton Tablelands Mineral and Lapidary Club

# FOR SALE

Please contact Graham or Lyn Byrne on 07 4091 4905 in relation to the below listed items.

- MINELAB “Emdar” Conveyor Belt nugget detector. Serviced by Minelab. Includes operation manual and Air Ram for Shute - \$15,000.00 + gst
- Gardner Denver Hydratrack 3500 Hydraulic Drill Rig. 12 ft rods will drill to 5” hole
- Cat V8 motor. Air con cab. Many spares - \$35,000.00 + gst
- 6x6 K&L Water Pump & pulley. GC - \$200.00
- 4 ft sluice suit 3” dredge - \$100.00



## WANTED

10 Meter light mode duty conveyor – complete

Contact Graham or Lyn as above

# FOR SALE

Dry Blower 50 tph capacity - \$10,000

10 meter Conveyor with three phase electric, brand new - \$8,000

Contact Owen on 07 40625248



Please contact Max on 0419 657 607 or 07 47752499 or 07 40602267 for enquiries on items listed below

## Mobile Gravity Gold Plant

Professionally built in WA. 2 tph. Large capacity scrubber for the treatment of high clay content material. Twin fines concentrators, Tails sluice. Fines sluice. Engine plant powered by a Honda GX 200. Mounted on wheels but can be put on a trailer.



Excellent alluvial processing plant designed for either bulk sampling of deposits or full time small scale production. View new model on [www.amtas.com.au](http://www.amtas.com.au) (Looks similar to pictured Gold Plant) \$8,000 firm.



Professional built in WA. BSP 10 in good condition. Can do up to 30m<sup>3</sup> per hour. Excellent test plant or production plant. Requires generator and pump. Plant situation in Townsville. \$17,000

**WANTED:** 6x4 or 5x4 water pump with motor. Must be in good condition and ready for work.

# FOR SALE

## FOR SALE

Alluvial Mining Lease 20472  
Located in the White Horse Area

10 sub block EPM 18117  
Located on Mount Madden Dome  
covering the Buchanan hard rock with  
alluvial systems  
Contact Buddy Kelly 07 40602245

## GOLD MINING LEASE FOR SALE

9 ha granted alluvial mining lease near  
Groganville, in the Palmer Goldfields  
area. Good Access. Permanent Water.  
Phone: (07) 4095 3324  
Mobile: 0448 761 743

## FOR SALE

- 6X6 Kelly & Lewis Water Pump & Pulley, good condition \$200
- 4 ft sluice suit 3" dredge \$100
- Minelab 2100 Metal Detector 2 coils, all accessories & case \$1000

## WANTED

- Impactor to crush 12 – 15 tph quartz

Phone: 07 40914905 or 0429 959 459

## WANTED

Looking to source/purchase the following:

- 240v benchtop Kiln
- Blacksmithing anvil
- Old style map drawers

Also interested in old lapidary equipment  
that might be sitting collecting dust...

Phone Claire on 0488 299 296

# ADVERTISING



Turbopan™ gold pan is a tool for the prospector and artisan miner involved in small scale mining. Whether you're a hobbyist out looking for a run or a crevice filled with gold, or gold panning for a living in a developing country, Turbopan is the right piece of prospecting equipment to get the gold quickly and easily.

Kim Hillier - 0428 250 364

Atherton Mower and Chainsaw Services  
55 Tolga Rd, Atherton 4883  
Ph: (07) 40 917 499  
Fax: (07) 40 917 448

[sales@athertonmowers.com.au](mailto:sales@athertonmowers.com.au)  
[www.athertonmowers.com.au](http://www.athertonmowers.com.au)



**Did you know, that members can advertise items for sale, items wanted and businesses for free in the Miners Right? For inclusion, please email Fiona with details at [fiona@miningrpservices.com.au](mailto:fiona@miningrpservices.com.au)**



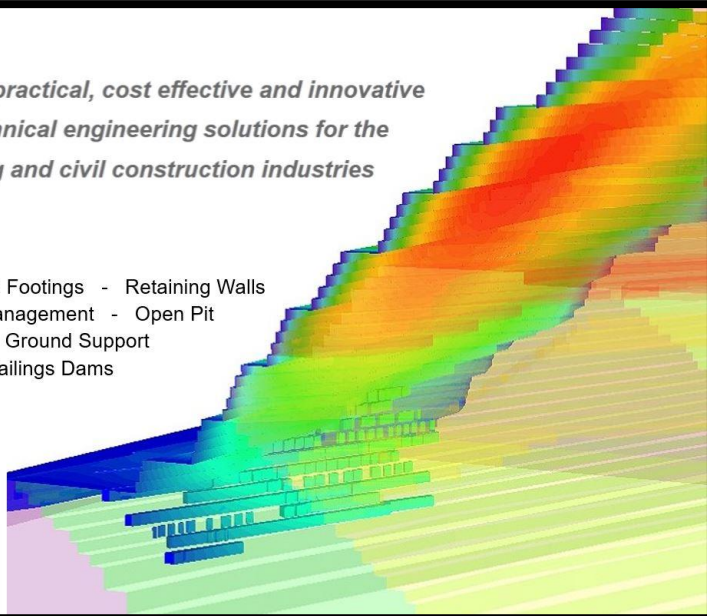


*Providing practical, cost effective and innovative  
geotechnical engineering solutions for the  
mining and civil construction industries*

Site Investigations - Foundations & Footings - Retaining Walls  
Slope Stability - Rock Fall Management - Open Pit  
Underground Mining - Ground Support  
Waste Dumps and Tailings Dams

The only geotechnical and rock  
engineers in the Far North who  
specialize in your mining needs!

W: [www.geckogeotech.com](http://www.geckogeotech.com)  
E: [info@geckogeotech.com](mailto:info@geckogeotech.com)  
M: 0497 377 228



**Mining & Resource Permit Services**

*Dependable Tenure Management & Pegging*

Contact: **Reuben Thomas & Fiona Abbey**

Phone: 07 40566516

Mobile: 0407080673

"Tenure Management, Pegging, GPS, Mapping"

Postal Address: PO Box 14202, Mount Sheridan Qld 4868

EMAIL: [reuben@miningrpservices.com.au](mailto:reuben@miningrpservices.com.au) or  
[fiona@miningrpservices.com.au](mailto:fiona@miningrpservices.com.au)



*Locally Owned and Operated*  
**FOR ALL YOUR FUEL  
AND OIL NEEDS**  
SERVICING FAR NORTH QUEENSLAND  
Ph: (07) 4098 8222

**Preston**  
LAW

*Outcome Driven*

**We offer outcome-driven and practical legal solutions**

**Areas of Practice:**

- Native Title
- Cultural Heritage
- Landowner Compensation Agreements
- Land Court Objection and Compensation Hearings
- Assignment of Mining Tenements
- Joint Venture Agreements

**Call Andrew Kerr**

PARTNER  
E: [akerr@prestonlaw.com.au](mailto:akerr@prestonlaw.com.au)  
P: +61 7 4052 0710  
F: +61 7 4031 0282  
M: 0427 7428 040  
Address: 29 McLeod St  
Cairns Qld 4870

Visit [www.prestonlaw.com.au](http://www.prestonlaw.com.au) to view our full range of services

**Kim Hillier  
Geologist**

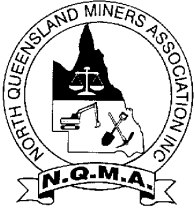
Located in Mareeba.

Extensive experience in the Palmer, Hodgkinson and Georgetown areas with both hard rock and alluvial operations. Tenement administration, ML and EPM valuations, exploration surface work and drilling programs. Ph: 0428 250 364

**Editors Notes:**

The Miners Right gets published every couple of months and usually in time for the upcoming meeting. The MR is a great way to get information out to the Mining public. We are constantly asking for contributions to make the newsletter interesting and informative. If you would like to see something in particular or you can contribute in stories, historical information or general mining info please send an email to [fiona@miningrpservices.com.au](mailto:fiona@miningrpservices.com.au) or phone through on 07 4056 6516.





# NORTH QUEENSLAND MINERS' ASSOCIATION INC.

ABN 76 525 585 093

## APPLICATION FOR MEMBERSHIP

I/We.....  
the undersigned, being an eligible person, partnership, or company, hereby apply for Membership of the North Queensland Miners' Association Inc. (See eligibility clause below)

BUSINESS NAME.....

POSTAL ADDRESS.....

.....POSTCODE.....

CONTACT PERSON.....

Phone No during day:.....Fax No:.....

E-mail address if available.....

NUMBER and LOCATION of MINING TENEMENT/S held or ASSOCIATION WITH MINING INDUSTRY.....  
.....

I/We hereby agree to comply with the Rules and Regulations as prescribed in the Constitution of the North Queensland Miner's Association Inc.

☐ **Full Membership.** Enclosed herewith is Annual Membership Fee of \$100.00.

Eligibility for Membership: 'Any person, partnership or company who: is actively involved in mining or prospecting; holds or has an application for any mining tenure allowable under the Queensland Mineral Resources Act 1989 or any Act that replaces it; has a tenement before the Land and Resources Tribunal; or has a direct professional interest in the mining industry.'

☐ **Corporate Membership.** Enclosed herewith is Annual Membership Fee of \$250.00.

Eligibility for Membership: 'Any company which: is actively involved in mining or prospecting; holds or has an application for any mining tenure allowable under the Queensland Mineral Resources Act 1989 or any Act that replaces it; has a tenement before the Land and Resources Tribunal; or has a direct professional interest in the mining industry.'

☐ **Associate Membership.** Enclosed herewith is Annual Membership Fee of \$40.00.

Eligibility for Associate Membership: 'Any person or partnership who has interests in fossicking for gold, gems and metals; or any company or individual providing goods or services to the mining industry but not directly involved in mining'.

SIGNED .....

DATE ...../...../.....

Please send Application Form to:

NQMA Treasurer: Claire Mackney, PO box 706, Mareeba Qld 4880  
email: Claire.Mackney@bigpond.com